

AT 2:20 O'CLOCK P M

JAN 24 2013

CLARA JONES
COUNTY CLERK, PANOLA COUNTY, TEXASBy Clara Jones DEPUTY**MEETING OF COMMISSIONERS' COURT
OF PANOLA COUNTY**

TO WHOM IT MAY CONCERN:

PURSUANT TO THE TEXAS OPEN MEETINGS ACT, NOTICE IS HEREBY GIVEN THAT A SPECIAL MEETING OF THE COMMISSIONERS' COURT OF PANOLA COUNTY, TEXAS WILL BE HELD ON THE 28TH DAY OF JANUARY, 2013, IN THE COMMISSIONERS' COURTROOM IN THE PANOLA COUNTY COURTHOUSE IN CARTHAGE, TEXAS AT 9:00 O'CLOCK A.M. AT WHICH MEETING THE FOLLOWING SUBJECTS WILL BE DISCUSSED AND THE FOLLOWING MATTERS ACTED UPON:

OPENING PRAYER.**OPEN MEETING:**

1. **CITIZEN COMMENTS:** This is for citizens to comment on any subject not on the current agenda concerning county business. Members of the Court may answer direct questions, but any action from this item must be scheduled on a future agenda.
2. **COMMISSIONERS' REPORT:** These are for informational purposes only. Any action that needs to be taken on the basis of these reports will be placed on a future agenda for action.
3. **COUNTY JUDGE'S REPORT:** This is for informational purposes only. Any action that needs to be taken on the basis of this report will be placed on a future agenda for action.
4. **CONSENT ITEMS:**

PERSONNEL

- a. To record the employment of Shelly Avery as a Detention Officer with the Panola County Sheriff's Department effective January 21, 2013 at the rate of \$12.00 per hour.
- b. To record the termination of Angie Lawhorn as a Communications Officer with the Panola County Sheriff's Department effective January 11, 2013.

- c. To record a change in status of employment for Ashley Esquivel from Detention Officer to Senior Detention Officer with the Panola County Sheriff's Department effective January 21, 2013 at the rate of \$14.34.
- d. To record a change in status of employment for Shakami Manning from Detention Officer to Communications Officer with the Panola County Sheriff's Department effective January 21, 2013 at the rate of \$14.34.
- e. To record the employment of Johnnie Pass as a Detention Officer with the Panola County Sheriff's Department effective January 26, 2013 at the rate of \$12.00 per hour. 18
- f. To record the termination of Sandra Lavender as Secretary with the Panola County Sheriff's Department effective January 22, 2013.
- g. To record the corrected employment date of January 16, 2013 for Brady Odom, a Patrol Deputy with the Panola County Sheriff's Department, at the rate of \$18.71 per hour.
- h. To record the retirement of Gaylen Williams, a Foreman with the Panola County Road and Bridge Department, Precinct #1, effective January 31, 2013.

ROAD & BRIDGE

- a. To approve and record requests by Fuels Cotton Valley Gathering, LLC to cross under Panola County Road #4053 with a sixteen (16") inch line.
- b. To approve and record a request by Fuels Cotton Valley Gathering, LLC to cross under Panola County Road #463 with a sixteen (16") inch line.
- c. To approve and record a request by Fuels Cotton Valley Gathering, LLC to cross under Panola County Road #448 with a sixteen (16") inch line.
- d. To approve and record a request by Fuels Cotton Valley Gathering, LLC to cross under Panola County Road #446 with a sixteen (16") inch line.
- e. To approve and record a request by Fuels Cotton Valley Gathering, LLC to cross under Panola County Road #401 with a sixteen (16") inch line.

MISCELLANEOUS

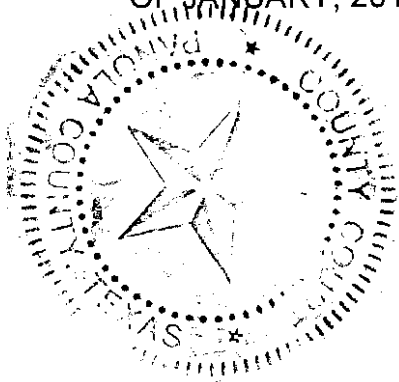
- a. To approve Tentative Schedule for 2013 Budget Process for Fiscal Year 2014.
- b. To record Statement of Officer and Oath of Office forms for Panola County Reserve Deputy Constable, Precincts #1 and #4, Alan Scarborough.
- c. To approve and record 2012 Budget Amendment No. 25.
- d. To approve and record 2013 Budget Amendment No. 2.

REQUESTS FOR CONFERENCE ATTENDANCE

- a. To approve and record a Request for Attendance at a Conference form(s) for the following Panola County elected official(s)/employee(s): Panola County Sheriff's Department Detention Officer Colton Quick.
5. To approve Road & Bridge requisitions and to approve payment of current Panola County bills as presented on vouchers prepared and submitted by the County Auditor.
 6. Presentation by Mike Parker regarding Mildred Faye Jefferson plaque; and to discuss and act upon placement of such plaque.
 7. To discuss and act upon reviewing and re-approving the Equal Employment Opportunity Plan/Policy for Panola County.
 8. To discuss and act upon approving a Proposed Election Agreement between Panola County and Gary ISD.
 9. To discuss and act upon approving a Proposal to upgrade the panic notification system for the Panola County Courthouse and Panola County Judicial Center.
 10. To discuss and act upon approving a Change Order resulting in a savings of \$2,690.08 from Cultural Surroundings with regards to the Cantilevered Welded Frame Shelving for the Sammy Brown Library.
 11. To discuss and act upon approving the purchase of one (1) motor grader through HGAC for the Panola County Road and Bridge Department, Precinct #3.
 12. To discuss and act upon adopting Order #2013-01 creating change funds for the Tax Assessor-Collector's offices.
 13. To discuss and act upon approving a proposal from J. E. Kingham Construction for installation of a plastic laminate clad wood door at Warrant Room A105 of the Panola County Sheriff's Department.
 14. To discuss and act upon approving a change in status for Brandon Sheppard from Operator to Foreman with the Panola County Road and Bridge Department, Precinct #1, effective ~~January 29, 2013~~ February 1, 2013 at the rate of \$3,412.16 per month.
 15. To discuss and act upon employing Kelvin Roquemore as a Truck Driver with the Panola County Road and Bridge Department, Pct. #3, effective upon successful completion of drug test and physical at the rate of \$12.59 per hour.
 16. To discuss and act upon approving a change in status for Terry Evans from Operator to Foreman with the Panola County Road and Bridge Department, Precinct #3, effective ~~February 1, 2013~~ January 29, 2013 at the rate of \$3,412.16 per month.

ADJOURNMENT

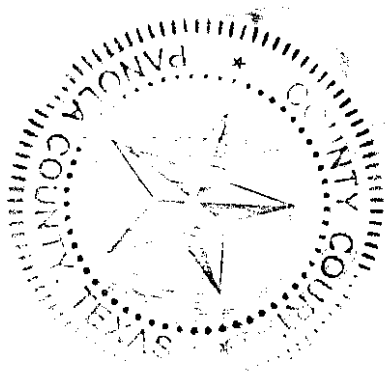
WITNESS THE HAND OF THE UNDERSIGNED CLERK ON THIS THE 24TH DAY OF JANUARY, 2013 AT 2:20 O'CLOCK P.M.



Clara Jones
CLARA JONES, COUNTY CLERK
PANOLA COUNTY, TEXAS

By: Clara Jones ~~Deputy~~

I, CLARA JONES, CLERK OF THE COMMISSIONERS' COURT OF PANOLA COUNTY, TEXAS DO HEREBY CERTIFY THAT THE ABOVE NOTICE WAS POSTED ON THE OFFICIAL BULLETIN BOARD IN THE PANOLA COUNTY COURTHOUSE IN THE CITY OF CARTHAGE, TEXAS AND IN A PUBLIC PLACE VISIBLE AT ALL TIMES ON THE 24TH DAY OF JANUARY, 2013 AT 2:20 O'CLOCK P.M.



Clara Jones
CLARA JONES, COUNTY CLERK
PANOLA COUNTY, TEXAS

By: Clara Jones ~~Deputy~~

FILED FOR RECORD
IN MY OFFICE
AT 3:30 O'CLOCK P. M.

FEB 11 2013

CLARA JONES
COUNTY CLERK, PANOLA COUNTY, TEXAS
BY Clara Jones DEPUTY

The State of Texas
The County of Panola

On this the 28th day of January A.D. 2013, the Commissioners' Court of Panola County, Texas met in a Special Meeting of the Court at 9:00 o'clock a.m. in the Commissioners' Courtroom of said County with the following members of the Court present:

David L. Anderson	County Judge
Ronnie LaGrone	Commissioner, Precinct #1
John Gradberg	Commissioner, Precinct #2
Frank R. Langley, Jr.	Commissioner, Precinct #3
Dale LaGrone	Commissioner, Precinct #4

with none absent, constituting a quorum of the Court. Also attending were Clara Jones, County Clerk, and Lee Ann Jones, Administrative Assistant to the County Judge. Attached to and made a part of these minutes is a list of other attendees and the office or organization that each represents. The following proceedings were held at this meeting:

OPEN MEETING:

PRAYER: Commissioner John Gradberg gave the prayer.

1. CITIZEN COMMENTS:

There were no citizen comments.

2. COMMISSIONERS' REPORTS:

There were no Commissioners' Report.

3. COUNTY JUDGE'S REPORT:

There was no report from Judge Anderson.

4. CONSENT ITEMS:

PERSONNEL

a. To record the employment of Shelly Avery as a Detention Officer with the Panola County Sheriff's Department effective January 21, 2013 at the rate of \$12.00 per hour.

b. To record the termination of Angie Lawhorn as a Communications Officer with the Panola County Sheriff's Department effective January 11, 2013.

c. To record a change in status of employment for Ashley Esquivel from Detention Officer to Senior Detention Officer with the Panola County Sheriff's Department effective January 21, 2013 at the rate of \$14.34.

d. To record a change in status of employment for Shakami Manning from Detention Officer to Communications Officer with the Panola County Sheriff's Department effective January 21, 2013 at the rate of \$14.34.

- e. To record the employment of Johnnie Pass as a Detention Officer with the Panola County Sheriff's Department effective January 18, 2013 at the rate of \$12.00 per hour.
- f. To record the termination of Sandra Lavender as Secretary with the Panola County Sheriff's Department effective January 22, 2013.
- g. To record the corrected employment date of January 16, 2013 for Brady Odom, a Patrol Deputy with the Panola County Sheriff's Department, at the rate of \$18.71 per hour.
- h. To record the retirement of Gaylen Williams, a foreman with the Panola County Road and Bridge Department, Precinct #1, effective January 31, 2013.

ROAD & BRIDGE

- a. To approve and record a requests by Fuels Cotton Valley Gathering, LLC to cross under Panola County Road #4053 with a sixteen (16") inch line.
- b. To approve and record a request by Fuel Cotton Valley Gathering, LLC to cross under Panola County Road #463 with a sixteen (16") inch line.
- c. To approve and record a request by Fuel Cotton Valley Gathering, LLC to cross under Panola County Road #448 with a sixteen (16") inch line.
- d. To approve and record a request by Fuel Cotton Valley Gathering, LLC to cross under Panola County Road #446 with a sixteen (16") inch line.
- e. To approve and record a request by Fuel Cotton Valley Gathering, LLC to cross under Panola County Road #401 with a sixteen (16") inch line.

MISCELLANEOUS

- a. To approve Tentative Schedule for 2013 Budget Process for Fiscal Year 2014.
- b. To record Statement of Officer and Oath of Office forms for Panola County Reserve Deputy Constable, Precincts #1 and #4, Alan Scarborough.
- c. To approve and record 2012 Budget Amendment No.25.
- d. To approve and record 2013 Budget Amendment No. 2.

REQUESTS FOR CONFERENCE ATTENDANCE

- a. To approve and record a Request for Attendance at a Conference form(s) for the following Panola County elected official(s)/employee(s): Panola County Sheriff's Department Detention Officer Colton Quick.

Commissioner Ronnie LaGrone moved and Commissioner Frank Langley seconded the motion to approve all the Consent Items. The motion passed unanimously.

A COPY OF EACH AMENDMENT REQUEST AND/OR BOND IS ATTACHED TO AND MADE A PART OF THE MINUTES

- 5. Commissioner Dale LaGrone moved and Commissioner John Gradberg seconded the motion to approve Road & Bridge requisitions and to approve payment of current Panola County bills as presented on vouchers prepared and submitted by the County Auditor. The motion passed unanimously. SEE COPY OF BILLS ATTACHED.

6. Mike Parker made a presentation on Mildred Faye Jefferson, a native of Panola County. He asked the Court to consider placing a plaque in Anderson Park for Dr. Jefferson.

After the presentation Commissioner Ronnie LaGrone moved and Commissioner Dale Lagrone seconded the motion to placing a plaque in Anderson Park for Mildred Faye Jefferson at a location to be determined later. The motion passed unanimously. SEE COPY OF PRESENTATION ATTACHED.

7. Commissioner John Gradberg moved and Commissioner Frank Langley seconded the motion to review and re-approve the Equal Employment Opportunity Plan/Policy for Panola County. The motion passed unanimously. SEE PLAN/POLICY ATTACHED.

8. Commissioner Dale LaGrone moved and Commissioner Ronnie LaGrone seconded the motion to approve a Proposed Election Agreement between Panola County and Gary ISD. The motion passed unanimously. SEE COPY OF AGREEMENT ATTACHED.

9. Commissioner Ronnie LaGrone moved and Commissioner John Gradberg seconded the motion to upgrade the panic notification system for the Panola County Courthouse and Panola County Judicial Center. The motion passed unanimously.

10. Commissioner Ronnie LaGrone moved and Commissioner Frank Langley seconded the motion to approve a Change Order resulting in a savings of \$2,690.08 from Cultural Surroundings with regards to the Cantilevered Welded Frame Shelving for the Sammy Brown Library. The motion passed unanimously. SEE COPY OF CHANGE ORDER ATTACHED.

11. Commissioner Frank Langley moved and Commissioner Dale LaGrone seconded the motion to approve the purchase of one (1) motor grader through HGAC for the Panola County Road and Bridge Department, Precinct #3. The motion passed unanimously.

12. Commissioner Dale LaGrone moved and Commissioner John Gradberg seconded the motion to adopt Order #2013-01 creating change funds for the Tax Assessor-Collector's Office. The motion passed unanimously. SEE COPY OF ORDER ATTACHED.

13. Judge Anderson moved and Commissioner Ronnie LaGrone seconded the motion to approve a proposal from J. E. Kingham Construction for installation of a plastic laminate clad wood door at Warrant Room #105 of the Panola County Sheriff's Department. The motion failed by a vote of 2-3. Commissioner John Gradberg, Commissioner Dale LaGrone and Commissioner Frank Langley voted no. SEE COPY OF PROPOSAL ATTACHED.

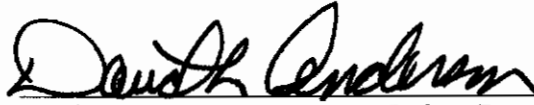
14. Commissioner Ronnie LaGrone moved and Commissioner Dale LaGrone seconded the motion to approve a change in status for Brandon Sheppard from Operator to Foreman with the Panola County Road and Bridge Department, Precinct #1, effective February 1, 2013 at the rate of \$3,412.16 per month. The motion passed unanimously. SEE COPY OF PERSONNEL CHANGE REQUEST ATTACHED.

15. Commissioner Frank Langley moved and Commissioner John Gradberg seconded the motion to employ Kelvin Roquemore as a Truck Driver with the Panola County Road and Bridge Department, Precinct #3, effective upon successful completion of drug test and physical at the rate of \$12.59 per hour. The motion passed unanimously.

16. Commissioner Frank Langley moved and Commissioner Ronnie LaGrone seconded the motion to approve a change in status for Terry Evans from Operator to Foreman with the Panola County Road and Bridge Department, Precinct #3, effective January 29, 2013 at the rate of \$3,412.16 per month. The motion passed unanimously. SEE COPY OF PERSONNEL CHANGE REQUEST ATTACHED.

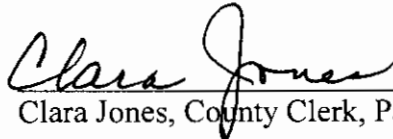
The meeting was then adjourned.

Dated this the 28th day of January, 2013.

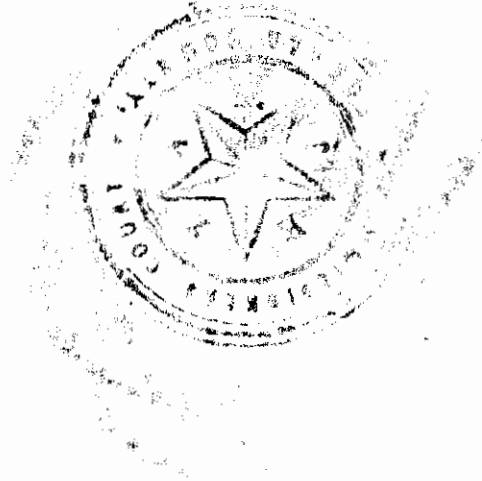


David L. Anderson, County Judge, Panola County, Texas

ATTEST:



Clara Jones, County Clerk, Panola County, Texas



Commissioners Court Meeting
January 28, 2013

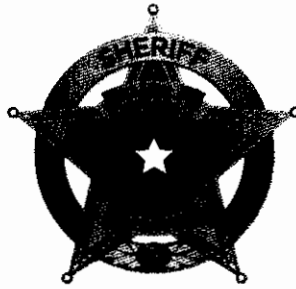
VOL. 82 PAGE 787

1. *Lois Portman*
2. *Karen Marsalis*
3. *WILLIAM B. (BUTCH) MARSALIS*
4. *Dellie Hoduin*
5. *Mike Parker*
6. *Roger [unclear]*
7. *John [unclear]*

CONSENT

ITEMS

314 W. Wellington
Carthage, Texas 75633
Phone: 903.693.0333



VOL. 82 PAGE 789

Ron Clinton
Sheriff

PANOLA COUNTY SHERIFF'S OFFICE

January 11, 2013

Honorable David Anderson
Panola County Judge
110 S. Sycamore
Carthage, Texas 75633

Dear Judge Anderson,

Please add the following item to the next scheduled meeting of the Panola County Commissioner's Court:

Please record the employment of Shelly Avery as Detention Officer effective January 21, 2013, at pay rate of \$12.00 an hour.

Sincerely,

Ron Clinton
Sheriff

JE/lj
CC: Sidney Burns
Gloria Portman

314 W. Wellington
Carthage, Texas 75633
Phone: 903.693.0333
Fax: 903.693.9336



Ron Clinton
Sheriff

PANOLA COUNTY SHERIFF'S OFFICE

January 14, 2013

The Honorable David Anderson
Panola County Judge
110 S. Sycamore
Carthage, Texas 75633

Dear Judge Anderson,

Please add the following items to the next scheduled meeting of the Panola County Commissioner's Court:

Please record the termination of Angie Lawhorn as Communication Officer effective January 11, 2013.

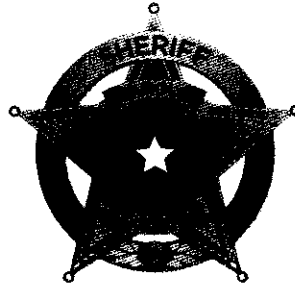
Sincerely,

Ron Clinton
Sheriff

JE/lj

CC: Sidney Burns
Gloria Portman

314 W. Wellington
Carthage, Texas 75633
Phone: 903.693.0333
Fax: 903.693.9336



Ron Clinton
Sheriff

PANOLA COUNTY SHERIFF'S OFFICE

Honorable David Anderson
Panola County Judge
110 S. Sycamore
Carthage, Texas 75633

January 16, 2013

Dear Judge Anderson,

Please add the following item to the next scheduled meeting of the Panola County Commissioner's Court:

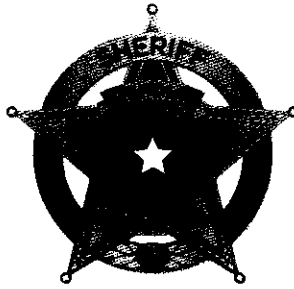
Please record the status change for Ashley Esquivel from Detention Officer to Senior Detention Officer at a pay rate of \$14.34 an hour effective January 21, 2013.

Sincerely,

Ron Clinton
Sheriff

RC/sl
CC: Sidney Burns
Gloria Portman

314 W. Wellington
Carthage, Texas 75633
Phone: 903.693.0333
Fax: 903.693.9336



Ron Clinton
Sheriff

PANOLA COUNTY SHERIFF'S OFFICE

Honorable David Anderson
Panola County Judge
110 S. Sycamore
Carthage, Texas 75633

January 16, 2013

Dear Judge Anderson,

Please add the following item to the next scheduled meeting of the Panola County Commissioner's Court:

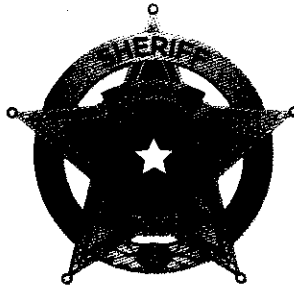
Please record status change of employment of Shakami Manning from Detention Officer to Communication Officer effective date January 21, 2013, at pay rate of \$14.34 an hour.

Sincerely,

Ron Clinton
Sheriff

RC/sl
CC: Sidney Burns
Gloria Portman

314 W. Wellington
Carthage, Texas 75633
Phone: 903.693.0333
Fax: 903.693.9336



VOL. 82 PAGE 793

Ron Clinton
Sheriff

PANOLA COUNTY SHERIFF'S OFFICE

Honorable David Anderson
Panola County Judge
110 S. Sycamore
Carthage, Texas 75633

January 16, 2013

Dear Judge Anderson,

Please add the following item to the next scheduled meeting of the Panola County Commissioner's Court:

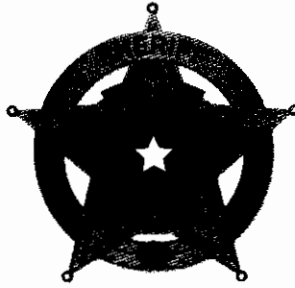
Please record the employment of Johnnie Pass as Detention Officer effective January 26, 2013, at pay rate of \$12.00 an hour.

Sincerely,

Ron Clinton
Sheriff

RC/sl
CC: Sidney Burns
Gloria Portman

314 W. Wellington
Carthage, Texas 75633
Phone: 903.693.0333
Fax: 903.693.9366



Ron Clinton
Sheriff

PANOLA COUNTY SHERIFF'S OFFICE

January 22, 2013

Honorable David Anderson
Panola County Judge
110 S. Sycamore
Carthage, Texas 75633

Dear Judge Anderson,

Please add the following item to the next scheduled meeting of the Panola County Commissioner's Court:

1. Please record the termination of employment of Sandra Lavender effective January 22, 2013.

Sincerely,

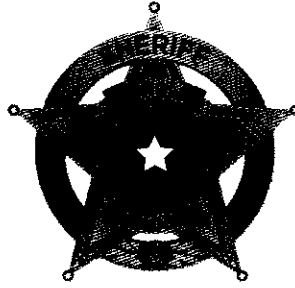
A handwritten signature in black ink, appearing to read "Ron Clinton", written in a cursive style.

Ron Clinton
Sheriff

RC/hg

CC: Sidney Burns
Gloria Portman

314 W. Wellington
Carthage, Texas 75633
Phone: 903.693.0333
Fax: 903.693.9366



Ron Clinton
Sheriff

PANOLA COUNTY SHERIFF'S OFFICE

January 22, 2013

Honorable David Anderson
Panola County Judge
110 S. Sycamore
Carthage, Texas 75633

Dear Judge Anderson,

Please add the following item to the next scheduled meeting of the Panola County Commissioner's Court:

1. Please record the employment of Brady Odom as a Patrol Deputy effective January 16, 2013 at a pay rate of \$18.71 per hour.

Sincerely,

Ron Clinton
Sheriff

RC/hg

CC: Sidney Burns
Gloria Portman

NOTICE OF PROPOSED INSTALLATION
PIPELINE AND/OR UTILITY LINES

TO: THE PANOLA COUNTY COMMISSIONER'S COURT

c/o

PANOLA COUNTY ROAD & BRIDGE DEPARTMENT, CARTHAGE, TEXAS

Formal notice is hereby given that:

Fuels Cotton Valley Gathering, LLC proposes to place a
(COMPANY NAME)

Sixteen (16") inch line within the Right-of-Way
(PIPE SIZE)

of County Road: 4053 (see attached map) as follows:
(NUMBER OF ROAD)

The proposed pipeline will cross under the indicated roads on the attached sheet.
Installation shall be made by boring a total length of 40 feet line in Panola County.

The location and description of the proposed line and appurtenances is more fully shown
by the copies of the drawings attached to this notice. The line will be constructed and
maintained on the County Right-of-Way as directed by the County Commissioners in
accordance with current Panola County Specifications.

Construction of this line will begin on or after the Eleventh (11) day of
February, 2013.

FIRM: Fuels Cotton Valley Gathering, LLC
BY: ATF - Jon Cheney
TITLE: Agent & HIF
ADDRESS: 5118 Westheimer, Ste. 1900
Houston, TX 77057
PHONE: (713) 735-3654

Please Send approval to:
Land Acquisitions, Inc.
Attn: Jesse Pabb
102 Railroad St.
Farmerville, LA 71241

**SPECIAL SPECIFICATIONS
FOR PIPELINES CROSSING IN BORED HOLES
AND PLACED PARALLEL TO COUNTY ROADS**

GENERAL NOTE: The construction of this project shall follow "The Panola County Road and Bridge Department Standard Specifications" with respect to barricades, flagmen, flares, warning signs, and all responsibility for complaints or damage suits by traveling public and adjacent property owners.

1. Exaction material shall not be placed on road shoulders or traffic lanes or in ditches where drainage would be impaired. When excavation is permitted near the roadway, where, in the opinion of the County, the support of the oil road structure is endangered, sheeting, cribbing, other measures shall be taken to prevent damage to the roadway or the creation of traffic hazard.
2. All excavations shall be backfilled in a neat and workmanlike manner and all disturbed areas shall be restored to a condition comparable to the original condition. Backfill material shall be consolidated to a density comparable to that of the adjacent undisturbed material, replacing all of the excavated material except that displaced by pipe. The degree of compaction shall be such as to prevent future settlement. Excess material displaced by the pipe shall be removed from the right-of-way or otherwise disposed of to the satisfaction of the county's representative. Pipe laying operation shall not be carried on when soil conditions are such that construction equipment will cause rutting. Backfill operations shall be kept within one mile of trenching and/or pipe laying operations.
3. Sod and/or other erosion control measures removed or disturbed by the installation shall be replaced. This shall include keeping separate and replacing existing topsoil, importing sod or seeding or a combination of these methods together with fertilizer and water as necessary to re-establish vegetative cover in a healthy and growing condition.
4. The pipe or, if encased, the encasement pipe shall completely fit the bored hole.
5. All private and commercial access driveways disturbed by pipe laying shall be restored to a condition comparable to that which existed prior to these operations. Special care shall be taken to compact backfill and base material to prevent future settlement. All work shall be complete to the owner's satisfaction. All public access driveways with paved surfaces shall be crossed by the bored hole method. Crossings of dirt or gravel public access driveways may be made as specified for private and commercial access driveways except that provisions shall be made for uninterrupted flow of traffic.

6. No trees or shrubbery shall be cut or trimmed without the approval of the Panola County Road and Bridge Department.
7. Regulations and ordinances of incorporated cities shall be complied with, if within the city limits.

Commissioners:

Precinct # 1 Ronnie LaGrone
Precinct # 2 John W. Gradberg
Precinct # 3 Frank R. Langley, Jr.
Precinct # 4 Dale LaGrone

APPROVAL

January 28, 2013

TO: Mr. Jesse Rabb
Land Acquisitions, Inc.
102 Railroad St.
Farmerville, Louisiana 71241

RE: **CR #4053**

The Panola County Commissioners' Court offers no objection to the location on the right-of-way of your proposed **sixteen (16") inch** line as shown by accompanying drawings and notice except as noted below.

It is expressly understood that the County Commissioners' Court does not purpose hereby, to grant any right, claim, title or easement in or upon this county road. It is further understood that in the future should for any reason the county need to work, improve, relocate, widen, increase, add to, or in any manner change the structure of this right-of-way, any required relocation of said lines shall be at the sole expense of owner.

All work on the county right-of-way shall be performed in accordance with the county instructions. The installations shall not damage any part of the road and adequate provisions must be made to cause minimum inconvenience to traffic and adjacent owners. Special specifications for placing this line are as follows:

1. All lines are to be installed a minimum of 36 inches below the flow line of the adjacent drainage or barrow ditch.
2. All excavation within the right-of-way and not under surfacing shall be backfilled by tamping in 6 inch horizontal layers. All surplus material shall be removed from the right-of-way and the excavation finished flush with surrounding natural ground.
3. Lines crossing under surfaced roads and under surfacing cross roads within the right-of-way shall be placed by boring. Boring shall extend from crown line to crown line. Gravity from sewer lines under roadways shall be cast iron pipe.
4. All lines, where practicable, shall be located to cross roadbed at approximately right angles thereto. No lines are to be installed under or within 50 feet of either end of any bridge. No lines shall be placed in any culvert or within 10 feet of the closest point of same.

5. Parallel line will be installed as near the right-of-way lines as is possible and no parallel line will be installed in the roadbed or between the drainage ditch and the roadbed without special permission of the Panola County Commissioners' Court.
6. Operations along roadbeds shall be performed in such manner that all excavated material be kept off the pavement at all times, as well as all operating equipment and materials. No equipment or installation procedures will be used which will damage any road surface or structures. The cost of any repairs to road surface, roadbed, structures or other right-of-way features as a direct result of this installation will be borne by the owner of this line.
7. Barricades, warning signs, lights, and flag man(men) when necessary shall be provided by the contractor or owner. One-half (1/2) of the traveled portion of the road must be open at all times.

Approved: 
COUNTY JUDGE

COMMISSIONERS:

Precinct #1 Ronnie LaGrone
Precinct #2 John Gradberg
Precinct #3 Frank R. Langley, Jr.
Precinct #4 Dale LaGrone

PANOLA COUNTY, TEXAS
W. ANDERSON SURVEY, ABSTRACT 4

SCALE: 1" = 50'

LAT: 32.117732
LON: -94.277327

JOE B. WOOTEN
et ux
PROPERTY

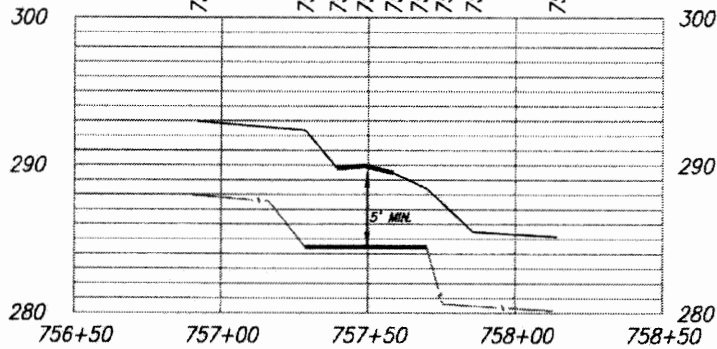
N.W. LUMAN
PROPERTY

PROPOSED PIPELINE

CR 4053

89'

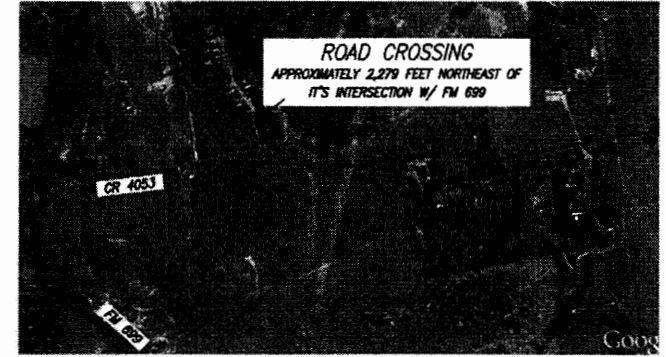
756+92	GROUND	292.94
757+29	FENCE	292.35
757+40	EDGE OF ROAD	289.77
757+49	C.L.	289.94
757+58	EDGE OF ROAD	289.46
757+69	R.O.W.	289.41
757+70	GROUND	285.49
757+85	GROUND	285.49
758+14	GROUND	285.17



PROFILE

HORIZONTAL SCALE: 1" = 50'
VERTICAL SCALE: 1" = 10'

DATUM BASED ON TEXAS STATE PLANE
COORDINATE SYSTEM, NAD 83 NORTH CENTRAL
ZONE, NAVD 88, ELEVATIONS
MSL, DERIVED FROM GPS OBSERVATIONS



ROAD CROSSING
APPROXIMATELY 2,279 FEET NORTHEAST OF
IT'S INTERSECTION W/ FM 699

VICINITY MAP
N.T.S.

PIPE DATA
16" O.D. X 0.500" W.T.,
GRADE X-52, API-5L
FBE ERW

MAOP - 1,460 psig
MINIMUM YIELD STRENGTH - 52,000 psi

				dcp Midstream	
				PROPOSED PIPELINE CROSSING CR 4053 A PANOLA COUNTY, TEXAS	
REV.	DATE	BY	DESCRIPTION	CHK.	
PROJECT No. LOGANSPORT					
LINK FIELD SERVICES INCORPORATED					
P.O. BOX 1485 MINERAL WELLS, TX 76068 800-462-7199					
DRAWN BY: CMB		DATE: 12/04/2012		P:\DCP\East Texas\Logansport\Profiles\CR 4053 A.dwg	
CHECKED BY: JDS		APE:			
SCALE: 1"=50'		JOB: LOGANSPORT			

NOTICE OF PROPOSED INSTALLATION
PIPELINE AND/OR UTILITY LINES

TO: THE PANOLA COUNTY COMMISSIONER'S COURT

c/o

PANOLA COUNTY ROAD & BRIDGE DEPARTMENT, CARTHAGE, TEXAS

Formal notice is hereby given that:

Fuels Cotton Valley Gathering LLC proposes to place a
(COMPANY NAME)

Sixteen (16") inch line within the Right-of-Way
(PIPE SIZE)

of County Road: 4053 (see attached map) as follows:
(NUMBER OF ROAD)

The proposed pipeline will cross under the indicated roads on the attached sheet.
Installation shall be made by boring a total length of 45 feet line in Panola County.

The location and description of the proposed line and appurtenances is more fully shown
by the copies of the drawings attached to this notice. The line will be constructed and
maintained on the County Right-of-Way as directed by the County Commissioners in
accordance with current Panola County Specifications.

Construction of this line will begin on or after the Eleventh (11) day of
February, 2013.

FIRM: Fuels Cotton Valley Gathering LLC
BY: ATF - Jon Cheney
TITLE: Agent & AT
ADDRESS: 5718 Westheimer, Ste. 1900
Houston, TX 77057
PHONE: (713) 735-3654

Please send approval to:
Land Acquisitions, Inc.
Attn: Jesse Pabb
102 Railroad St.
Farmerville, LA 71241

**SPECIAL SPECIFICATIONS
FOR PIPELINES CROSSING IN BORED HOLES
AND PLACED PARALLEL TO COUNTY ROADS**

GENERAL NOTE: The construction of this project shall follow "The Panola County Road and Bridge Department Standard Specifications" with respect to barricades, flagmen, flares, warning signs, and all responsibility for complaints or damage suits by traveling public and adjacent property owners.

1. Exaction material shall not be placed on road shoulders or traffic lanes or in ditches where drainage would be impaired. When excavation is permitted near the roadway, where, in the opinion of the County, the support of the oil road structure is endangered, sheeting, cribbing, other measures shall be taken to prevent damage to the roadway or the creation of traffic hazard.
2. All excavations shall be backfilled in a neat and workmanlike manner and all disturbed areas shall be restored to a condition comparable to the original condition. Backfill material shall be consolidated to a density comparable to that of the adjacent undisturbed material, replacing all of the excavated material except that displaced by pipe. The degree of compaction shall be such as to prevent future settlement. Excess material displaced by the pipe shall be removed from the right-of-way or otherwise disposed of to the satisfaction of the county's representative. Pipe laying operation shall not be carried on when soil conditions are such that construction equipment will cause rutting. Backfill operations shall be kept within one mile of trenching and/or pipe laying operations.
3. Sod and/or other erosion control measures removed or disturbed by the installation shall be replaced. This shall include keeping separate and replacing existing topsoil, importing sod or seeding or a combination of these methods together with fertilizer and water as necessary to re-establish vegetative cover in a healthy and growing condition.
4. The pipe or, if encased, the encasement pipe shall completely fit the bored hole.
5. All private and commercial access driveways disturbed by pipe laying shall be restored to a condition comparable to that which existed prior to these operations. Special care shall be taken to compact backfill and base material to prevent future settlement. All work shall be complete to the owner's satisfaction. All public access driveways with paved surfaces shall be crossed by the bored hole method. Crossings of dirt or gravel public access driveways may be made as specified for private and commercial access driveways except that provisions shall be made for uninterrupted flow of traffic.

6. No trees or shrubbery shall be cut or trimmed without the approval of the Panola County Road and Bridge Department.
7. Regulations and ordinances of incorporated cities shall be complied with, if within the city limits.

Commissioners:

Precinct # 1 Ronnie LaGrone
Precinct # 2 John W. Gradberg
Precinct # 3 Frank R. Langley, Jr.
Precinct # 4 Dale LaGrone

APPROVAL

January 28, 2013

TO: Mr. Jesse Rabb
Land Acquisitions, Inc.
102 Railroad St.
Farmerville, Louisiana 71241

RE: **CR #4053**

The Panola County Commissioners' Court offers no objection to the location on the right-of-way of your proposed **sixteen (16") inch** line as shown by accompanying drawings and notice except as noted below.

It is expressly understood that the County Commissioners' Court does not purpose hereby, to grant any right, claim, title or easement in or upon this county road. It is further understood that in the future should for any reason the county need to work, improve, relocate, widen, increase, add to, or in any manner change the structure of this right-of-way, any required relocation of said lines shall be at the sole expense of owner.

All work on the county right-of-way shall be performed in accordance with the county instructions. The installations shall not damage any part of the road and adequate provisions must be made to cause minimum inconvenience to traffic and adjacent owners. Special specifications for placing this line are as follows:

1. All lines are to be installed a minimum of 36 inches below the flow line of the adjacent drainage or barrow ditch.
2. All excavation within the right-of-way and not under surfacing shall be backfilled by tamping in 6 inch horizontal layers. All surplus material shall be removed from the right-of-way and the excavation finished flush with surrounding natural ground.
3. Lines crossing under surfaced roads and under surfacing cross roads within the right-of-way shall be placed by boring. Boring shall extend from crown line to crown line. Gravity from sewer lines under roadways shall be cast iron pipe.
4. All lines, where practicable, shall be located to cross roadbed at approximately right angles thereto. No lines are to be installed under or within 50 feet of either end of any bridge. No lines shall be placed in any culvert or within 10 feet of the closest point of same.

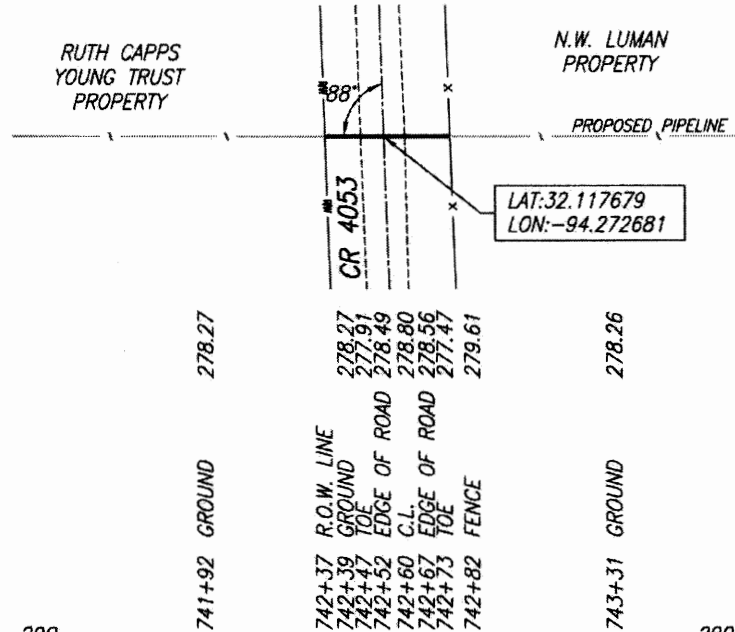
5. Parallel line will be installed as near the right-of-way lines as is possible and no parallel line will be installed in the roadbed or between the drainage ditch and the roadbed without special permission of the Panola County Commissioners' Court.
6. Operations along roadbeds shall be performed in such manner that all excavated material be kept off the pavement at all times, as well as all operating equipment and materials. No equipment or installation procedures will be used which will damage any road surface or structures. The cost of any repairs to road surface, roadbed, structures or other right-of-way features as a direct result of this installation will be borne by the owner of this line.
7. Barricades, warning signs, lights, and flag man(men) when necessary shall be provided by the contractor or owner. One-half (1/2) of the traveled portion of the road must be open at all times.

Approved: 
COUNTY JUDGE

COMMISSIONERS:

Precinct #1 Ronnie LaGrone
Precinct #2 John Gradberg
Precinct #3 Frank R. Langley, Jr.
Precinct #4 Dale LaGrone

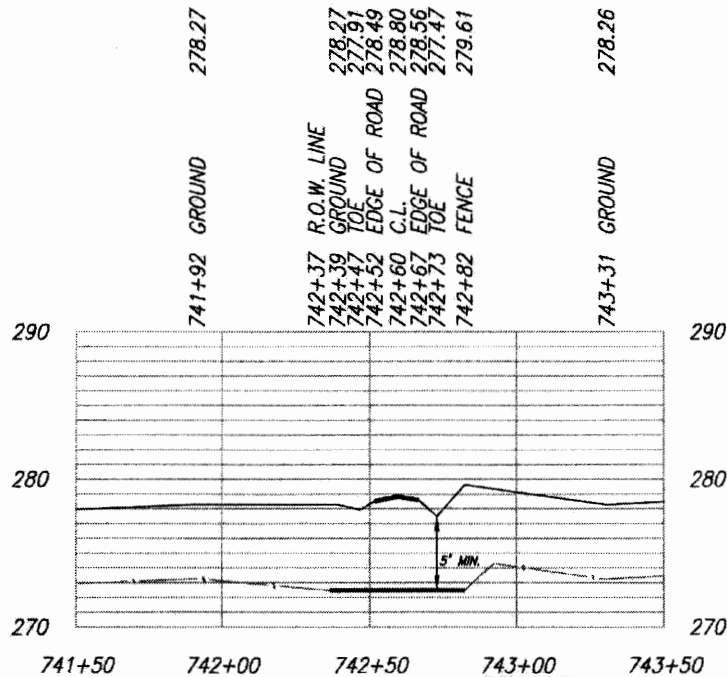
PANOLA COUNTY, TEXAS
W. ANDERSON SURVEY, ABSTRACT 4



SCALE: 1" = 50'



VICINITY MAP
N.T.S.



PROFILE

HORIZONTAL SCALE: 1" = 50'
VERTICAL SCALE: 1" = 10'

DATUM BASED ON TEXAS STATE PLANE
COORDINATE SYSTEM, NAD 83 NORTH CENTRAL
ZONE, NAVD 88, ELEVATIONS
MSL, DERIVED FROM GPS OBSERVATIONS

PIPE DATA
16" O.D. X 0.500" W.T.,
GRADE X-52, API-5L
FBE ERW

MAOP - 1,460 psig
MINIMUM YIELD STRENGTH-52,000 psi

PROPOSED PIPELINE CROSSING CR 4053 B PANOLA COUNTY, TEXAS			
REV. DATE BY DESCRIPTION CHK. PROJECT No.	HMG ENGINEERING LTD. 2448 E. 81st ST. #2055, TULSA, OK 74137 918-493-2500 TX ENGR #10076 EXP 12/31/2012		
LINK FIELD SERVICES INCORPORATED P.O. BOX 1485 MINERAL WELLS, TX 76088 800-462-7199	DRAWN BY: CMB CHECKED BY: JDS SCALE: 1" = 50'	DATE: 12/21/2012 AFE: JOB: LOGANSPORT	P:\DCP\East Texas\Logansport\Profiles\CR 4053 B.dwg

NOTICE OF PROPOSED INSTALLATION
PIPELINE AND/OR UTILITY LINES

TO: THE PANOLA COUNTY COMMISSIONER'S COURT

c/o

PANOLA COUNTY ROAD & BRIDGE DEPARTMENT, CARTHAGE, TEXAS

Formal notice is hereby given that:

Fuels Cotton Valley Gathering, LLC proposes to place a
(COMPANY NAME)

Sixteen (16") inch line within the Right-of-Way
(PIPE SIZE)

of County Road: 463 (see attached map) as follows:
(NUMBER OF ROAD)

The proposed pipeline will cross under the indicated roads on the attached sheet. Installation shall be made by boring a total length of 40 feet line in Panola County.

The location and description of the proposed line and appurtenances is more fully shown by the copies of the drawings attached to this notice. The line will be constructed and maintained on the County Right-of-Way as directed by the County Commissioners in accordance with current Panola County Specifications.

Construction of this line will begin on or after the Eleventh (11) day of February, 2013.

FIRM: Fuels Cotton Valley Gathering, LLC
BY: ATF - Jon Cheney
TITLE: Agent & H.E.F.
ADDRESS: 5718 Westheimer Ste. 1900
Houston, TX 77057
PHONE: (713) 735-3654

Please send approval to:
Land Acquisitions, Inc.
Attn: Jesse Prabb
102 Railroad St.
Farmerville, LA 71241

**SPECIAL SPECIFICATIONS
FOR PIPELINES CROSSING IN BORED HOLES
AND PLACED PARALLEL TO COUNTY ROADS**

GENERAL NOTE: The construction of this project shall follow "The Panola County Road and Bridge Department Standard Specifications" with respect to barricades, flagmen, flares, warning signs, and all responsibility for complaints or damage suits by traveling public and adjacent property owners.

1. Exaction material shall not be placed on road shoulders or traffic lanes or in ditches where drainage would be impaired. When excavation is permitted near the roadway, where, in the opinion of the County, the support of the oil road structure is endangered, sheeting, cribbing, other measures shall be taken to prevent damage to the roadway or the creation of traffic hazard.
2. All excavations shall be backfilled in a neat and workmanlike manner and all disturbed areas shall be restored to a condition comparable to the original condition. Backfill material shall be consolidated to a density comparable to that of the adjacent undisturbed material, replacing all of the excavated material except that displaced by pipe. The degree of compaction shall be such as to prevent future settlement. Excess material displaced by the pipe shall be removed from the right-of-way or otherwise disposed of to the satisfaction of the county's representative. Pipe laying operation shall not be carried on when soil conditions are such that construction equipment will cause rutting. Backfill operations shall be kept within one mile of trenching and/or pipe laying operations.
3. Sod and/or other erosion control measures removed or disturbed by the installation shall be replaced. This shall include keeping separate and replacing existing topsoil, importing sod or seeding or a combination of these methods together with fertilizer and water as necessary to re-establish vegetative cover in a healthy and growing condition.
4. The pipe or, if encased, the encasement pipe shall completely fit the bored hole.
5. All private and commercial access driveways disturbed by pipe laying shall be restored to a condition comparable to that which existed prior to these operations. Special care shall be taken to compact backfill and base material to prevent future settlement. All work shall be complete to the owner's satisfaction. All public access driveways with paved surfaces shall be crossed by the bored hole method. Crossings of dirt or gravel public access driveways may be made as specified for private and commercial access driveways except that provisions shall be made for uninterrupted flow of traffic.

6. No trees or shrubbery shall be cut or trimmed without the approval of the Panola County Road and Bridge Department.
7. Regulations and ordinances of incorporated cities shall be complied with, if within the city limits.

Commissioners:

Precinct # 1 Ronnie LaGrone
Precinct # 2 John W. Gradberg
~~Precinct # 3 Frank R. Langley, Jr.~~
Precinct # 4 Dale LaGrone

APPROVAL

January 28, 2013

TO: Mr. Jesse Rabb
Land Acquisitions, Inc.
102 Railroad St.
Farmerville, Louisiana 71241

RE: **CR #463**

The Panola County Commissioners' Court offers no objection to the location on the right-of-way of your proposed **sixteen (16") inch** line as shown by accompanying drawings and notice except as noted below.

It is expressly understood that the County Commissioners' Court does not purpose hereby, to grant any right, claim, title or easement in or upon this county road. It is further understood that in the future should for any reason the county need to work, improve, relocate, widen, increase, add to, or in any manner change the structure of this right-of-way, any required relocation of said lines shall be at the sole expense of owner.

All work on the county right-of-way shall be performed in accordance with the county instructions. The installations shall not damage any part of the road and adequate provisions must be made to cause minimum inconvenience to traffic and adjacent owners. Special specifications for placing this line are as follows:

1. All lines are to be installed a minimum of 36 inches below the flow line of the adjacent drainage or barrow ditch.
2. All excavation within the right-of-way and not under surfacing shall be backfilled by tamping in 6 inch horizontal layers. All surplus material shall be removed from the right-of-way and the excavation finished flush with surrounding natural ground.
3. Lines crossing under surfaced roads and under surfacing cross roads within the right-of-way shall be placed by boring. Boring shall extend from crown line to crown line. Gravity from sewer lines under roadways shall be cast iron pipe.
4. All lines, where practicable, shall be located to cross roadbed at approximately right angles thereto. No lines are to be installed under or within 50 feet of either end of any bridge. No lines shall be placed in any culvert or within 10 feet of the closest point of same.

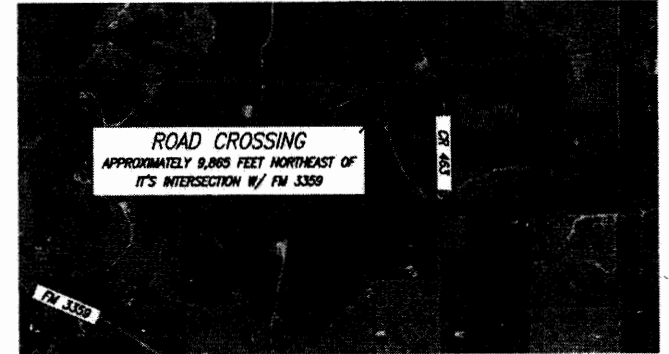
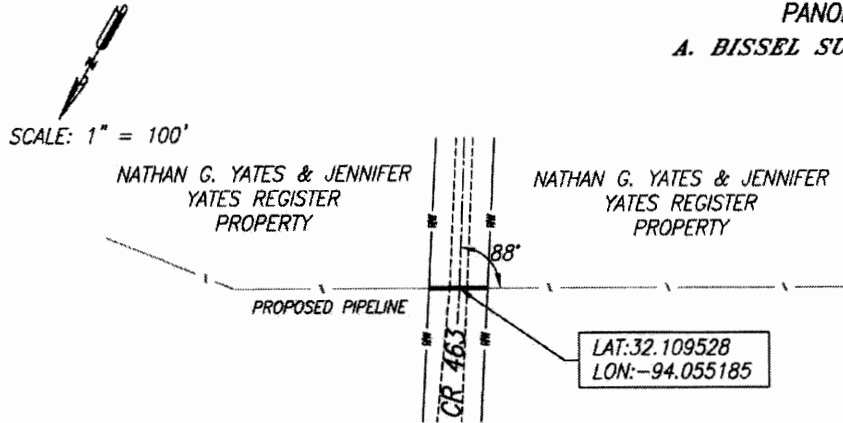
5. Parallel line will be installed as near the right-of-way lines as is possible and no parallel line will be installed in the roadbed or between the drainage ditch and the roadbed without special permission of the Panola County Commissioners' Court.
6. Operations along roadbeds shall be performed in such manner that all excavated material be kept off the pavement at all times, as well as all operating equipment and materials. No equipment or installation procedures will be used which will damage any road surface or structures. The cost of any repairs to road surface, roadbed, structures or other right-of-way features as a direct result of this installation will be borne by the owner of this line.
7. Barricades, warning signs, lights, and flag man(men) when necessary shall be provided by the contractor or owner. One-half (1/2) of the traveled portion of the road must be open at all times.

Approved: 
COUNTY JUDGE

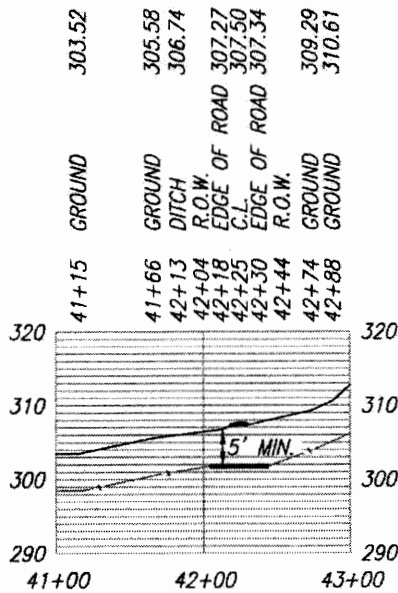
COMMISSIONERS:

Precinct #1 Ronnie LaGrone
Precinct #2 John Gradberg
Precinct #3 Frank R. Langley, Jr.
Precinct #4 Dale LaGrone

PANOLA COUNTY, TEXAS
 A. BISSEL SURVEY, ABSTRACT No. 89



VICINITY MAP
 N.T.S.



PROFILE

DATUM BASED ON TEXAS STATE PLANE
 COORDINATE SYSTEM, NAD 83 NORTH CENTRAL
 ZONE, NAVD 88, ELEVATIONS
 MSL, DERIVED FROM GPS OBSERVATIONS

HORIZONTAL SCALE: 1" = 100'
 VERTICAL SCALE: 1" = 20'

PIPE DATA
 16" O.D. X 0.500" W.T.,
 GRADE X-52, API-5L
 FBE ERW

MAOP - 1,460 psig
 MINIMUM YIELD STRENGTH-52,000 psi

REV.	DATE	BY	DESCRIPTION	CHK.
PROJECT No.				
HMG ENGINEERING LTD. 2448 E. 81st ST. #2055, TULSA, OK 74137 918-493-2500 TX ENGR #10076 EXP 12/31/2012				
LINK FIELD SERVICES INCORPORATED P.O. BOX 1485 MINERAL WELLS, TX 78068 800-462-7199				
PROPOSED PIPELINE CROSSING CR 463 PANOLA COUNTY, TEXAS		DRAWN BY: CHB CHECKED BY: JBS SCALE: 1" = 100'	DATE: 12/20/2012 AFE: JOB: LOGANSFORT	P:\DCP\East Texas\Logansport\Profiles\CR 463.dwg

NOTICE OF PROPOSED INSTALLATION
PIPELINE AND/OR UTILITY LINES

TO: THE PANOLA COUNTY COMMISSIONER'S COURT

c/o

PANOLA COUNTY ROAD & BRIDGE DEPARTMENT, CARTHAGE, TEXAS

Formal notice is hereby given that:

Fuels Cotton Valley Gathering, LLC proposes to place a
(COMPANY NAME)

Sixteen (16") inch line within the Right-of-Way
(PIPE SIZE)

of County Road: 448 (see attached map) as follows:
(NUMBER OF ROAD)

The proposed pipeline will cross under the indicated roads on the attached sheet.
Installation shall be made by boring a total length of 41 feet line in Panola County.

The location and description of the proposed line and appurtenances is more fully shown
by the copies of the drawings attached to this notice. The line will be constructed and
maintained on the County Right-of-Way as directed by the County Commissioners in
accordance with current Panola County Specifications.

Construction of this line will begin on or after the Eleventh (11) day of
February, 2013.

FIRM: Fuels Cotton Valley Gathering, LLC
BY: AIF - Jon Cheney
TITLE: Agent & AIF
ADDRESS: 5718 Westheimer, Ste. 1900
Houston, TX 77057
PHONE: (713) 735-3654

Please send approval to:
Land Acquisitions, Inc
Attn: Jesse Pabb
102 Railroad St.
Farmerville, LA 71241

**SPECIAL SPECIFICATIONS
FOR PIPELINES CROSSING IN BORED HOLES
AND PLACED PARALLEL TO COUNTY ROADS**

GENERAL NOTE: The construction of this project shall follow "The Panola County Road and Bridge Department Standard Specifications" with respect to barricades, flagmen, flares, warning signs, and all responsibility for complaints or damage suits by traveling public and adjacent property owners.

1. Exaction material shall not be placed on road shoulders or traffic lanes or in ditches where drainage would be impaired. When excavation is permitted near the roadway, where, in the opinion of the County, the support of the oil road structure is endangered, sheeting, cribbing, other measures shall be taken to prevent damage to the roadway or the creation of traffic hazard.
2. All excavations shall be backfilled in a neat and workmanlike manner and all disturbed areas shall be restored to a condition comparable to the original condition. Backfill material shall be consolidated to a density comparable to that of the adjacent undisturbed material, replacing all of the excavated material except that displaced by pipe. The degree of compaction shall be such as to prevent future settlement. Excess material displaced by the pipe shall be removed from the right-of-way or otherwise disposed of to the satisfaction of the county's representative. Pipe laying operation shall not be carried on when soil conditions are such that construction equipment will cause rutting. Backfill operations shall be kept within one mile of trenching and/or pipe laying operations.
3. Sod and/or other erosion control measures removed or disturbed by the installation shall be replaced. This shall include keeping separate and replacing existing topsoil, importing sod or seeding or a combination of these methods together with fertilizer and water as necessary to re-establish vegetative cover in a healthy and growing condition.
4. The pipe or, if encased, the encasement pipe shall completely fit the bored hole.
5. All private and commercial access driveways disturbed by pipe laying shall be restored to a condition comparable to that which existed prior to these operations. Special care shall be taken to compact backfill and base material to prevent future settlement. All work shall be complete to the owner's satisfaction. All public access driveways with paved surfaces shall be crossed by the bored hole method. Crossings of dirt or gravel public access driveways may be made as specified for private and commercial access driveways except that provisions shall be made for uninterrupted flow of traffic.

6. No trees or shrubbery shall be cut or trimmed without the approval of the Panola County Road and Bridge Department.
7. Regulations and ordinances of incorporated cities shall be complied with, if within the city limits.

Commissioners:

Precinct # 1 Ronnie LaGrone
Precinct # 2 John W. Gradberg
Precinct # 3 Frank R. Langley, Jr.
Precinct # 4 Dale LaGrone

APPROVAL

January 28, 2013

TO: Mr. Jesse Rabb
Land Acquisitions, Inc.
102 Railroad St.
Farmerville, Louisiana 71241

RE: **CR #448**

The Panola County Commissioners' Court offers no objection to the location on the right-of-way of your proposed **sixteen (16") inch** line as shown by accompanying drawings and notice except as noted below.

It is expressly understood that the County Commissioners' Court does not purpose hereby, to grant any right, claim, title or easement in or upon this county road. It is further understood that in the future should for any reason the county need to work, improve, relocate, widen, increase, add to, or in any manner change the structure of this right-of-way, any required relocation of said lines shall be at the sole expense of owner.

All work on the county right-of-way shall be performed in accordance with the county instructions. The installations shall not damage any part of the road and adequate provisions must be made to cause minimum inconvenience to traffic and adjacent owners. Special specifications for placing this line are as follows:

1. All lines are to be installed a minimum of 36 inches below the flow line of the adjacent drainage or barrow ditch.
2. All excavation within the right-of-way and not under surfacing shall be backfilled by tamping in 6 inch horizontal layers. All surplus material shall be removed from the right-of-way and the excavation finished flush with surrounding natural ground.
3. Lines crossing under surfaced roads and under surfacing cross roads within the right-of-way shall be placed by boring. Boring shall extend from crown line to crown line. Gravity from sewer lines under roadways shall be cast iron pipe.
4. All lines, where practicable, shall be located to cross roadbed at approximately right angles thereto. No lines are to be installed under or within 50 feet of either end of any bridge. No lines shall be placed in any culvert or within 10 feet of the closest point of same.

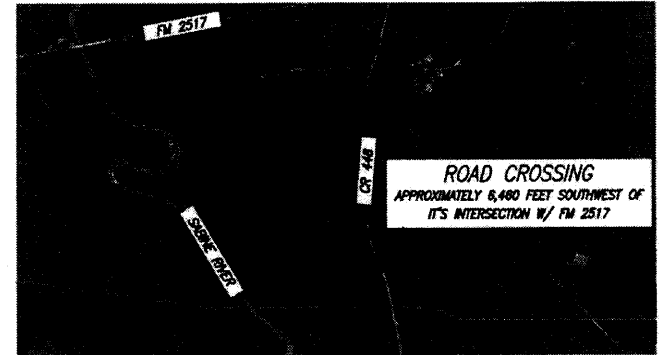
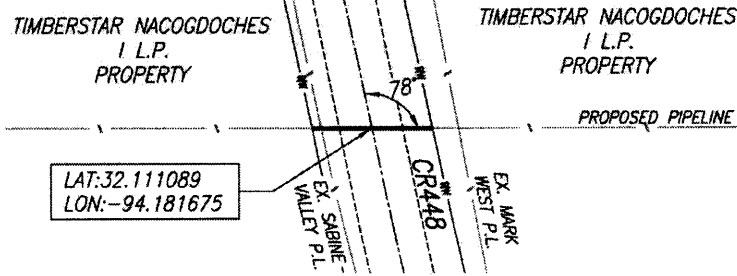
5. Parallel line will be installed as near the right-of-way lines as is possible and no parallel line will be installed in the roadbed or between the drainage ditch and the roadbed without special permission of the Panola County Commissioners' Court.
6. Operations along roadbeds shall be performed in such manner that all excavated material be kept off the pavement at all times, as well as all operating equipment and materials. No equipment or installation procedures will be used which will damage any road surface or structures. The cost of any repairs to road surface, roadbed, structures or other right-of-way features as a direct result of this installation will be borne by the owner of this line.
7. Barricades, warning signs, lights, and flag man(men) when necessary shall be provided by the contractor or owner. One-half (1/2) of the traveled portion of the road must be open at all times.

Approved: 
COUNTY JUDGE

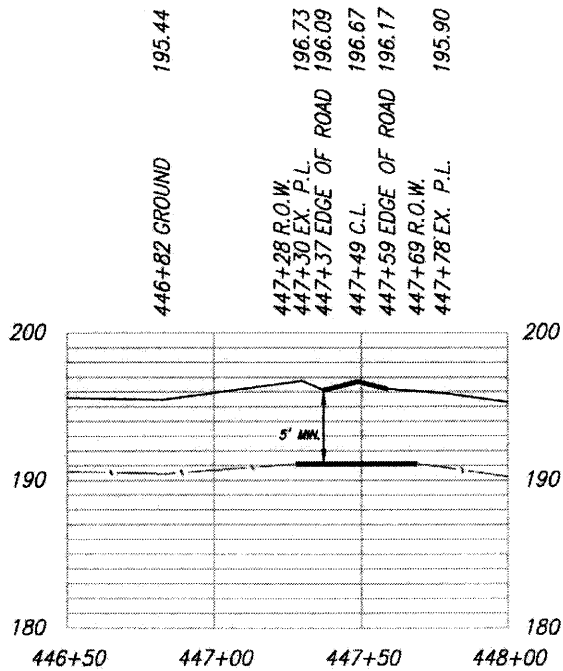
COMMISSIONERS:

Precinct #1 Ronnie LaGrone
Precinct #2 John Gradberg
Precinct #3 Frank R. Langley, Jr.
Precinct #4 Dale LaGrone

PANOLA COUNTY, TEXAS
 T. POWDRIL SURVEY, ABSTRACT No. 533



VICINITY MAP
 N.T.S.



PROFILE

HORIZONTAL SCALE: 1" = 50'
 VERTICAL SCALE: 1" = 10'

DATUM BASED ON TEXAS STATE PLANE
 COORDINATE SYSTEM, NAD 83 NORTH CENTRAL
 ZONE, NAVD 88, ELEVATIONS
 MSL, DERIVED FROM GPS OBSERVATIONS

PIPE DATA
 16" O.D. X 0.500" W.T.,
 GRADE X-52, API-5L
 FBE ERW

MAOP - 1,460 psig
 MINIMUM YIELD STRENGTH-52,000 psi

REV.	DATE	BY	DESCRIPTION	CHK.
PROJECT No.				
HMG ENGINEERING LTD. 2448 E. 81st ST. #2055, TULSA, OK 74137 918-493-2500 TX ENGR #10078 EXP 12/31/2012				
LINK FIELD SERVICES INCORPORATED P.O. BOX 1485 MINERAL WELLS, TX 76068 800-462-7199				
DRAWN BY: QMS		DATE: 12/11/2012		P:\DCP\East Texas\Logansport\Profiles\CR 448.dwg
CHECKED BY: JMS		APE		
SCALE: 1"=100'		JOB: LOGANSFORT		
PROPOSED PIPELINE CROSSING CR 448 PANOLA COUNTY, TEXAS				

NOTICE OF PROPOSED INSTALLATION
PIPELINE AND/OR UTILITY LINES

TO: THE PANOLA COUNTY COMMISSIONER'S COURT

c/o

PANOLA COUNTY ROAD & BRIDGE DEPARTMENT, CARTHAGE, TEXAS

Formal notice is hereby given that:

Fuels Cotton Valley Gathering, LLC proposes to place a
(COMPANY NAME)

Sixteen (16") inch line within the Right-of-Way
(PIPE SIZE)

of County Road: 446 (see attached map) as follows:
(NUMBER OF ROAD)

The proposed pipeline will cross under the indicated roads on the attached sheet.
Installation shall be made by boring a total length of 41 feet line in Panola County.

The location and description of the proposed line and appurtenances is more fully shown
by the copies of the drawings attached to this notice. The line will be constructed and
maintained on the County Right-of-Way as directed by the County Commissioners in
accordance with current Panola County Specifications.

Construction of this line will begin on or after the Eleventh(11) day of
February, 2013.

FIRM: Fuels Cotton Valley Gathering LLC
BY: AIF - Jon Cheney
TITLE: Agent & AIF
ADDRESS: 5718 Westheimer, Ste. 1900
Houston, TX 77057
PHONE: (713) 735-3654

Please send approval to:
Land Acquisitions, Inc.
Attn: Jesse Babb
102 Railroad St.
Farmerville, LA 71241

**SPECIAL SPECIFICATIONS
FOR PIPELINES CROSSING IN BORED HOLES
AND PLACED PARALLEL TO COUNTY ROADS**

GENERAL NOTE: The construction of this project shall follow "The Panola County Road and Bridge Department Standard Specifications" with respect to barricades, flagmen, flares, warning signs, and all responsibility for complaints or damage suits by traveling public and adjacent property owners.

1. Exaction material shall not be placed on road shoulders or traffic lanes or in ditches where drainage would be impaired. When excavation is permitted near the roadway, where, in the opinion of the County, the support of the oil road structure is endangered, sheeting, cribbing, other measures shall be taken to prevent damage to the roadway or the creation of traffic hazard.
2. All excavations shall be backfilled in a neat and workmanlike manner and all disturbed areas shall be restored to a condition comparable to the original condition. Backfill material shall be consolidated to a density comparable to that of the adjacent undisturbed material, replacing all of the excavated material except that displaced by pipe. The degree of compaction shall be such as to prevent future settlement. Excess material displaced by the pipe shall be removed from the right-of-way or otherwise disposed of to the satisfaction of the county's representative. Pipe laying operation shall not be carried on when soil conditions are such that construction equipment will cause rutting. Backfill operations shall be kept within one mile of trenching and/or pipe laying operations.
3. Sod and/or other erosion control measures removed or disturbed by the installation shall be replaced. This shall include keeping separate and replacing existing topsoil, importing sod or seeding or a combination of these methods together with fertilizer and water as necessary to re-establish vegetative cover in a healthy and growing condition.
4. The pipe or, if encased, the encasement pipe shall completely fit the bored hole.
5. All private and commercial access driveways disturbed by pipe laying shall be restored to a condition comparable to that which existed prior to these operations. Special care shall be taken to compact backfill and base material to prevent future settlement. All work shall be complete to the owner's satisfaction. All public access driveways with paved surfaces shall be crossed by the bored hole method. Crossings of dirt or gravel public access driveways may be made as specified for private and commercial access driveways except that provisions shall be made for uninterrupted flow of traffic.

6. No trees or shrubbery shall be cut or trimmed without the approval of the Panola County Road and Bridge Department.
7. Regulations and ordinances of incorporated cities shall be complied with, if within the city limits.

Commissioners:

Precinct # 1 Ronnie LaGrone
Precinct # 2 John W. Gradberg
Precinct # 3 Frank R. Langley, Jr.
Precinct # 4 Dale LaGrone

APPROVAL

January 28, 2013

TO: Mr. Jesse Rabb
Land Acquisitions, Inc.
102 Railroad St.
Farmerville, Louisiana 71241

RE: **CR #446**

The Panola County Commissioners' Court offers no objection to the location on the right-of-way of your proposed **sixteen (16") inch** line as shown by accompanying drawings and notice except as noted below.

It is expressly understood that the County Commissioners' Court does not purpose hereby, to grant any right, claim, title or easement in or upon this county road. It is further understood that in the future should for any reason the county need to work, improve, relocate, widen, increase, add to, or in any manner change the structure of this right-of-way, any required relocation of said lines shall be at the sole expense of owner.

All work on the county right-of-way shall be performed in accordance with the county instructions. The installations shall not damage any part of the road and adequate provisions must be made to cause minimum inconvenience to traffic and adjacent owners. Special specifications for placing this line are as follows:

1. All lines are to be installed a minimum of 36 inches below the flow line of the adjacent drainage or barrow ditch.
2. All excavation within the right-of-way and not under surfacing shall be backfilled by tamping in 6 inch horizontal layers. All surplus material shall be removed from the right-of-way and the excavation finished flush with surrounding natural ground.
3. Lines crossing under surfaced roads and under surfacing cross roads within the right-of-way shall be placed by boring. Boring shall extend from crown line to crown line. Gravity from sewer lines under roadways shall be cast iron pipe.
4. All lines, where practicable, shall be located to cross roadbed at approximately right angles thereto. No lines are to be installed under or within 50 feet of either end of any bridge. No lines shall be placed in any culvert or within 10 feet of the closest point of same.

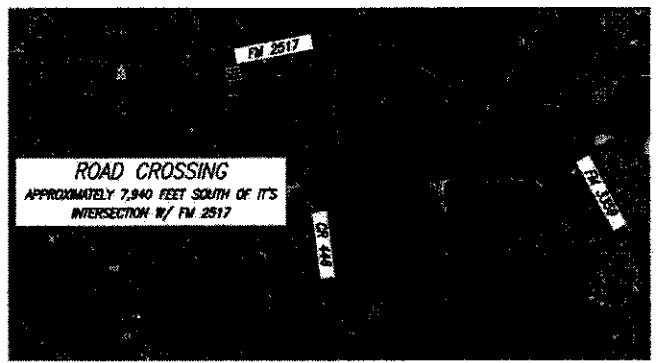
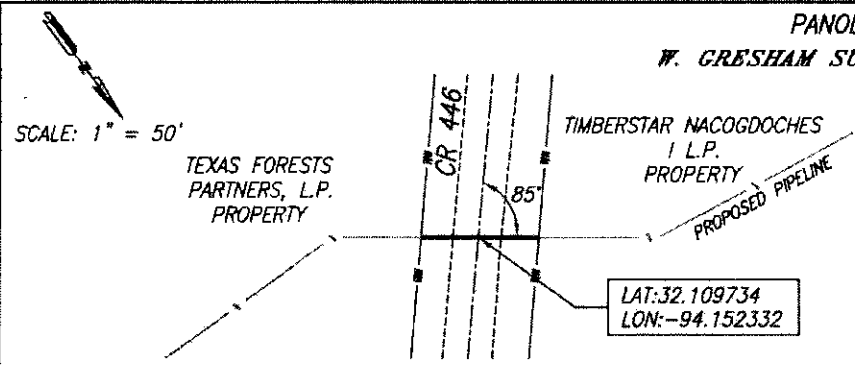
5. Parallel line will be installed as near the right-of-way lines as is possible and no parallel line will be installed in the roadbed or between the drainage ditch and the roadbed without special permission of the Panola County Commissioners' Court.
6. Operations along roadbeds shall be performed in such manner that all excavated material be kept off the pavement at all times, as well as all operating equipment and materials. No equipment or installation procedures will be used which will damage any road surface or structures. The cost of any repairs to road surface, roadbed, structures or other right-of-way features as a direct result of this installation will be borne by the owner of this line.
7. Barricades, warning signs, lights, and flag man(men) when necessary shall be provided by the contractor or owner. One-half (1/2) of the traveled portion of the road must be open at all times.

Approved: 
COUNTY JUDGE

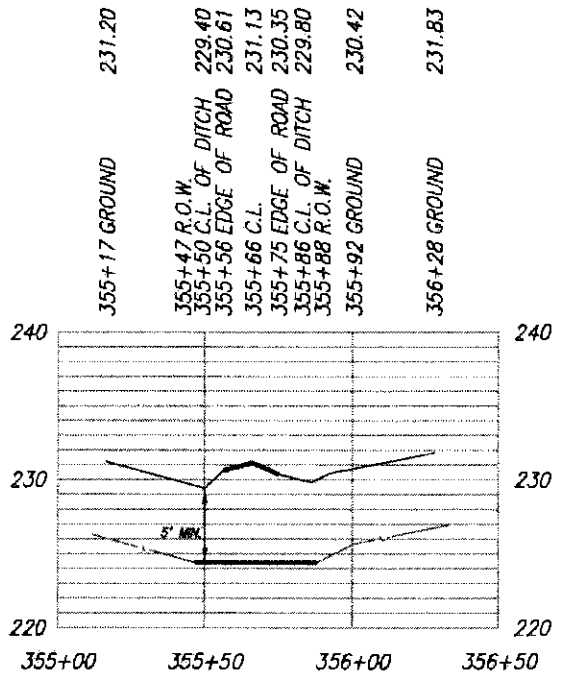
COMMISSIONERS:

Precinct #1 Ronnie LaGrone
Precinct #2 John Gradberg
Precinct #3 Frank R. Langley, Jr.
Precinct #4 Dale LaGrone

PANOLA COUNTY, TEXAS
 W. GRESHAM SURVEY, ABSTRACT No. 259



VICINITY MAP
 N.T.S.



PROFILE

HORIZONTAL SCALE: 1" = 50'
 VERTICAL SCALE: 1" = 10'

DATUM BASED ON TEXAS STATE PLANE
 COORDINATE SYSTEM, NAD 83 SOUTH CENTRAL
 ZONE, NAVD 88, ELEVATIONS
 MSL, DERIVED FROM GPS OBSERVATIONS

PIPE DATA
 16" O.D. X 0.500" W.T.,
 GRADE X-52, API-5L
 FBE ERW

MAOP - 1,460 psig
 MINIMUM YIELD STRENGTH-52,000 psi

REV.	DATE	BY	DESCRIPTION	CHK.
PROJECT No.				
HMG ENGINEERING LTD. 2448 E. 81st ST. #2055, TULSA, OK 74137 918-483-2500 TX ENGR #10076 EXP 12/31/2012				
LINK FIELD SERVICES INCORPORATED P.O. BOX 1485 MINERAL WELLS, TX 79068 800-452-7199				
PROPOSED PIPELINE CROSSING CR 446 PANOLA COUNTY, TEXAS				
DRAWN BY: CMH	DATE: 12/21/2012	P:\DCP\East Texas\Logansport\Profile\CR 446.dwg		
CHECKED BY: JDS	AFE:			
SCALE: 1" = 50'	JOB: LOGANSPORT			

NOTICE OF PROPOSED INSTALLATION
PIPELINE AND/OR UTILITY LINES

TO: THE PANOLA COUNTY COMMISSIONER'S COURT

c/o

PANOLA COUNTY ROAD & BRIDGE DEPARTMENT, CARTHAGE, TEXAS

Formal notice is hereby given that:

Fuels Cotton Valley Gathering LLC proposes to place a
(COMPANY NAME)

Sixteen (16") inch line within the Right-of-Way
(PIPE SIZE)

of County Road: 401 (see attached map) as follows:
(NUMBER OF ROAD)

The proposed pipeline will cross under the indicated roads on the attached sheet.
Installation shall be made by boring a total length of 44 feet line in Panola County.

The location and description of the proposed line and appurtenances is more fully shown
by the copies of the drawings attached to this notice. The line will be constructed and
maintained on the County Right-of-Way as directed by the County Commissioners in
accordance with current Panola County Specifications.

Construction of this line will begin on or after the Eleventh (11) day of
February, 2013.

FIRM: Fuels Cotton Valley Gathering LLC
BY: AIF - Jon Cheney
TITLE: Agent & AIF
ADDRESS: 5718 Westheimer, Ste. 1900
Houston, TX 77057
PHONE: (713) 735-3654

Please send approval to:
Attn. Land Acquisitions, Inc.
Jesse Babb
102 Railroad St.
Farmerville, LA 71241

**SPECIAL SPECIFICATIONS
FOR PIPELINES CROSSING IN BORED HOLES
AND PLACED PARALLEL TO COUNTY ROADS**

GENERAL NOTE: The construction of this project shall follow "The Panola County Road and Bridge Department Standard Specifications" with respect to barricades, flagmen, flares, warning signs, and all responsibility for complaints or damage suits by traveling public and adjacent property owners.

1. Exaction material shall not be placed on road shoulders or traffic lanes or in ditches where drainage would be impaired. When excavation is permitted near the roadway, where, in the opinion of the County, the support of the oil road structure is endangered, sheeting, cribbing, other measures shall be taken to prevent damage to the roadway or the creation of traffic hazard.
2. All excavations shall be backfilled in a neat and workmanlike manner and all disturbed areas shall be restored to a condition comparable to the original condition. Backfill material shall be consolidated to a density comparable to that of the adjacent undisturbed material, replacing all of the excavated material except that displaced by pipe. The degree of compaction shall be such as to prevent future settlement. Excess material displaced by the pipe shall be removed from the right-of-way or otherwise disposed of to the satisfaction of the county's representative. Pipe laying operation shall not be carried on when soil conditions are such that construction equipment will cause rutting. Backfill operations shall be kept within one mile of trenching and/or pipe laying operations.
3. Sod and/or other erosion control measures removed or disturbed by the installation shall be replaced. This shall include keeping separate and replacing existing topsoil, importing sod or seeding or a combination of these methods together with fertilizer and water as necessary to re-establish vegetative cover in a healthy and growing condition.
4. The pipe or, if encased, the encasement pipe shall completely fit the bored hole.
5. All private and commercial access driveways disturbed by pipe laying shall be restored to a condition comparable to that which existed prior to these operations. Special care shall be taken to compact backfill and base material to prevent future settlement. All work shall be complete to the owner's satisfaction. All public access driveways with paved surfaces shall be crossed by the bored hole method. Crossings of dirt or gravel public access driveways may be made as specified for private and commercial access driveways except that provisions shall be made for uninterrupted flow of traffic.

6. No trees or shrubbery shall be cut or trimmed without the approval of the Panola County Road and Bridge Department.
7. Regulations and ordinances of incorporated cities shall be complied with, if within the city limits.

Commissioners:

Precinct # 1 Ronnie LaGrone
Precinct # 2 John W. Gradberg
Precinct # 3 Frank R. Langley, Jr.
Precinct # 4 Dale LaGrone

APPROVAL

January 28, 2013

TO: Mr. Jesse Rabb
Land Acquisitions, Inc.
102 Railroad St.
Farmerville, Louisiana 71241

RE: **CR #401**

The Panola County Commissioners' Court offers no objection to the location on the right-of-way of your proposed **sixteen (16") inch** line as shown by accompanying drawings and notice except as noted below.

It is expressly understood that the County Commissioners' Court does not purpose hereby, to grant any right, claim, title or easement in or upon this county road. It is further understood that in the future should for any reason the county need to work, improve, relocate, widen, increase, add to, or in any manner change the structure of this right-of-way, any required relocation of said lines shall be at the sole expense of owner.

All work on the county right-of-way shall be performed in accordance with the county instructions. The installations shall not damage any part of the road and adequate provisions must be made to cause minimum inconvenience to traffic and adjacent owners. Special specifications for placing this line are as follows:

1. All lines are to be installed a minimum of 36 inches below the flow line of the adjacent drainage or barrow ditch.
2. All excavation within the right-of-way and not under surfacing shall be backfilled by tamping in 6 inch horizontal layers. All surplus material shall be removed from the right-of-way and the excavation finished flush with surrounding natural ground.
3. Lines crossing under surfaced roads and under surfacing cross roads within the right-of-way shall be placed by boring. Boring shall extend from crown line to crown line. Gravity from sewer lines under roadways shall be cast iron pipe.
4. All lines, where practicable, shall be located to cross roadbed at approximately right angles thereto. No lines are to be installed under or within 50 feet of either end of any bridge. No lines shall be placed in any culvert or within 10 feet of the closest point of same.

5. Parallel line will be installed as near the right-of-way lines as is possible and no parallel line will be installed in the roadbed or between the drainage ditch and the roadbed without special permission of the Panola County Commissioners' Court.
6. Operations along roadbeds shall be performed in such manner that all excavated material be kept off the pavement at all times, as well as all operating equipment and materials. No equipment or installation procedures will be used which will damage any road surface or structures. The cost of any repairs to road surface, roadbed, structures or other right-of-way features as a direct result of this installation will be borne by the owner of this line.
7. Barricades, warning signs, lights, and flag man(men) when necessary shall be provided by the contractor or owner. One-half (1/2) of the traveled portion of the road must be open at all times.

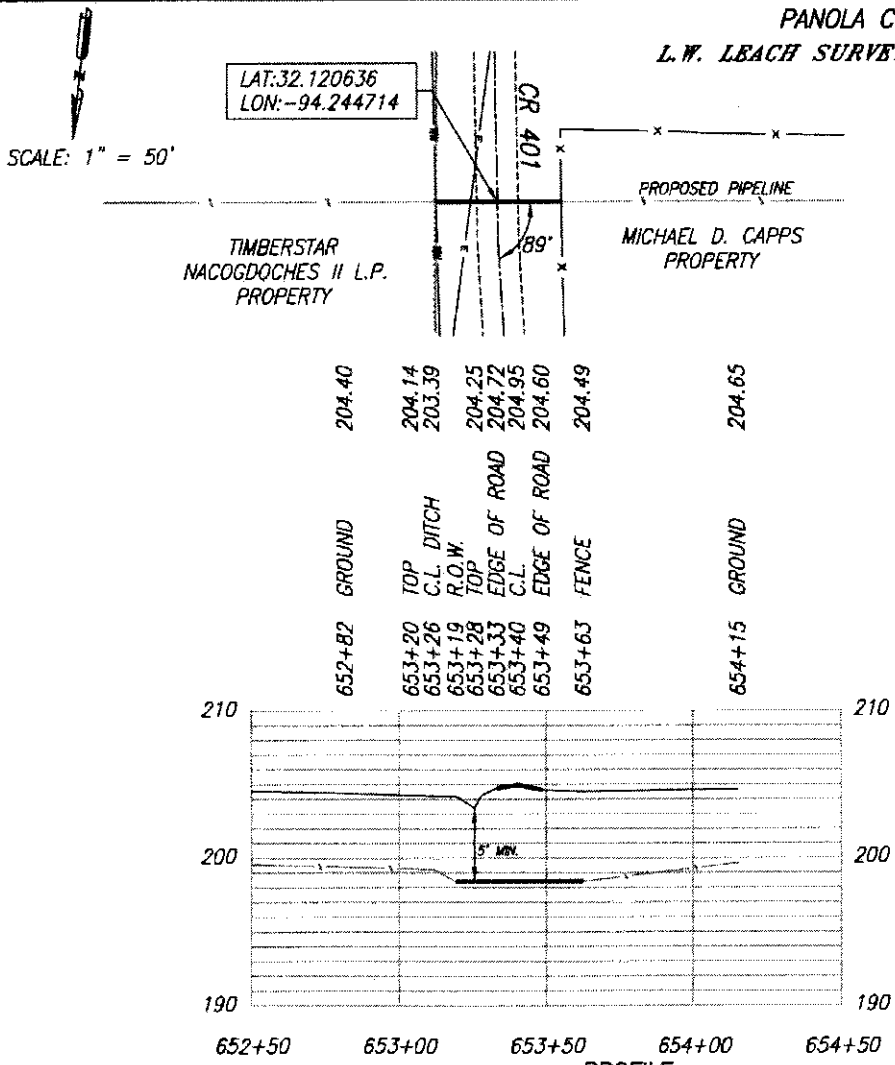
Approved: 
COUNTY JUDGE

COMMISSIONERS:

Precinct #1 Ronnie LaGrone
Precinct #2 John Gradberg
Precinct #3 Frank R. Langley, Jr.
Precinct #4 Dale LaGrone

PANOLA COUNTY, TEXAS

L.W. LBACH SURVEY, ABSTRACT No. 854



LAT: 32.120636
LON: -94.244714

SCALE: 1" = 50'

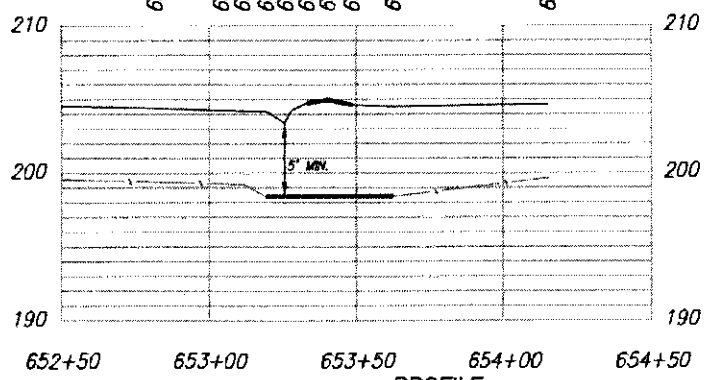
TIMBERSTAR
NACOGDOCHES II L.P.
PROPERTY

MICHAEL D. CAPPS
PROPERTY

CR 401

PROPOSED PIPELINE

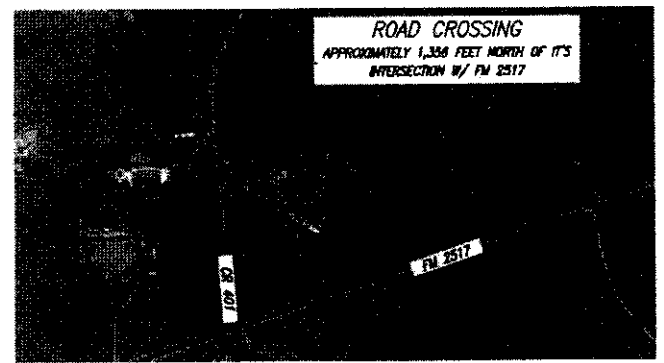
89'



PROFILE

HORIZONTAL SCALE: 1" = 50'
VERTICAL SCALE: 1" = 10'

DATUM BASED ON TEXAS STATE PLANE
COORDINATE SYSTEM, NAD 83 NORTH CENTRAL
ZONE, NAVD 88, ELEVATIONS
MSL, DERIVED FROM GPS OBSERVATIONS



VICINITY MAP
N.T.S.

PIPE DATA
16" O.D. X 0.500" W.T.,
GRADE X-52, API-5L
FBE ERW

MAOP - 1,460 psig
MINIMUM YIELD STRENGTH-52,000 psi

REV.	DATE	BY	DESCRIPTION	CHK.
PROJECT No.				
HMG ENGINEERING LTD. 2448 E. 81st ST. #2035, TULSA, OK 74137 918-493-2500 TX ENGR #10078 EXP 12/31/2012				
LINK FIELD SERVICES INCORPORATED P.O. BOX 1485 MINERAL WELLS, TX 76088 800-462-7199				
DRAWN BY: CMB		DATE: 12/17/2013		P:\DCP\East Texas\Logansport\Profiles\CR 401.dwg
CHECKED BY: MS		APE:		SCALE: 1" = 100'
JOB: LOGANSPORT				

PROPOSED PIPELINE CROSSING
CR 401
PANOLA COUNTY, TEXAS



**TENTATIVE SCHEDULE FOR
2013 BUDGET PROCESS FOR
2014 FISCAL YEAR**

<u>DATE</u>	<u>ITEM</u>
May 1	County Judge sends budget request letters to department heads.
May 20	Receive estimated preliminary appraisals.
May 24	Budget requests from department heads due back in County Judge's office.
May 31	Budget Workshop.
June 4	County Judge gives instructions to County Auditor for preparation of proposed budget. Auditor begins budget preparation.
July 8	Commissioners' Court Agenda Item: A. In accordance with the Property Tax Code, to officially appoint Debbie Crawford as Panola County's representative to calculate and publish the unit's effective and rollback tax rate schedules for tax roll year 2013.
July 25	The Chief Appraiser certifies the approved appraisal roll to each taxing unit. (Property Tax Code 26.01)
July 29	County Auditor delivers budget to County Judge, and County Judge begins review of budget to verify that this is the exact budget he wants to propose.
July 31	County Judge prepares letter of transmittal for his proposed budget, files proposed budget with County Clerk, and gives a copy to each Commissioner.

August 1

Commissioners' Court Agenda Items:

- A. Tax Assessor delivers effective and roll back tax rates to Commissioners' Court.
- B. To set Panola County Budget Hearing for Fiscal Year 2014 on August 26, 2013 at 1:00 p.m.; to set the adoption of the Fiscal Year 2014 Budget on August 26, 2013 after the Budget Hearing; and to authorize publication of same in accordance with the requirements of laws and regulations applicable thereto. (Local Government Code, Section 111.007)
- C. To authorize the County Judge to publish proposed salaries of Panola County Elected Officials as set out in the proposed Budget for Fiscal Year 2014 and to set the adoption of such salaries on August 26, 2013 after adoption of the Budget for Fiscal Year 2014 in accordance with the requirements of laws and regulations applicable thereto. (Local Government Code, Section 152.013)
- D. To discuss amount of revenue to be raised. If the proposed tax rate exceeds the effective tax rate, take a record vote and schedule public hearings for August 8, 2013 at 9:00 a.m. and August 15, 2013 at 9:00 a.m., and authorize applicable publications. (Tax Code, Section 26.05)

August 4

"Notice of Public Hearing on Tax Increase" (1st quarter-page notice) published at least 7 days before public hearing. (Tax Code, Section 26.06)

Publish Notice of Public Hearing on 2014 Budget.

Upload to website.

Publish Proposed Salaries of Panola County Elected Officials.

August 13

Commissioners' Court Agenda Item:

(ONLY ONE ITEM ALLOWED BY LAW ON AGENDA)

- 1. Public hearing on tax rate; schedule and announce meeting to adopt tax rate.

August 15

Commissioners' Court Agenda Item:

(ONLY ONE ITEM ALLOWED BY LAW ON AGENDA)

1. Public hearing on tax rate; schedule and announce meeting to adopt tax rate 3-14 days from this date (August 28, 2013 at 9:00 a.m.). (Local Government Code, Section 111.010) (7 Days)

August 18 (Sunday)

"Notice of Vote on Tax Rate" (2nd quarter-page notice) published at least 7 days before meeting to adopt tax rate. (Tax Code, Section 26.06) (8 Days)

August 26

Commissioners' Court Agenda Items:

- A. To conduct Panola County Budget Hearing for Fiscal Year 2014 at 1:00 p.m. pursuant to notice and publication thereof as required by law. The public is invited to attend and participate. (Local Government Code, Section 111.007)
- B. To adopt Panola County Budget for Fiscal Year 2014 at 1:05 p.m. (Local Government Code, Section 111.008)
- C. To adopt 2014 Elected Officials Salaries at 1:10 p.m. pursuant to notice and publication thereof as required by law. (Local Government Code, Section 111.010)

August 27

County Judge gives written notice to elected officials of the official's salary and personal expenses included in the adopted budget. Instructions for filing grievances are included. (Local Government Code, Section 152.016)

August 28

Commissioners' Court meeting at 9:00 a.m. to adopt Order 2013-___ setting the 2013 Tax Rate and Tax Levy and authorizing the Tax Assessor to prepare tax statements with approved tax rate. (Local Government Code, Section 111.010)

September 4 - 9:00 a.m.

Last day for elected official to file salary grievance. (Must be heard within 10 days of receipt of grievance.)

September 6

If no grievance is filed, County Judge files adopted budget with County Clerk.

No later than September 10
at 9:00 o'clock a.m.

If grievance is filed and heard, and if 6-8 members of Salary Grievance Committee vote to recommend increase, post 72 hour notice for Commissioners' Court Meeting.

No later than September 17
at 9:00 o'clock a.m.

Commissioners' Court meets to consider recommendation of Salary Grievance Committee.

County Judge files final adopted budget with County Clerk.

Form #2201 Rev. 10/2011

This space reserved for office use

Submit to:
SECRETARY OF STATE
Government Filings Section
P O Box 12887
Austin, TX 78711-2887
512-463-6334
512-463-5569 - Fax
Filing Fee: None



STATEMENT OF OFFICER

Statement

I, Alan Scarborough, do solemnly swear (or affirm) that I have not directly or indirectly paid, offered, promised to pay, contributed, or promised to contribute any money or thing of value, or promised any public office or employment for the giving or withholding of a vote at the election at which I was elected or as a reward to secure my appointment or confirmation, whichever the case may be, so help me God.

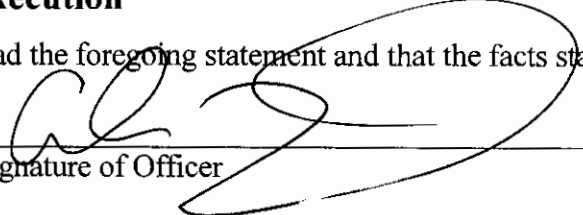
Position to Which Elected/Appointed: Reserve Deputy Constable, Precincts #1 & #4

City and/or County: Panola

Execution

Under penalties of perjury, I declare that I have read the foregoing statement and that the facts stated therein are true.

Date: 1-14-13


Signature of Officer

Revised 10/2011

Form #2204 Rev. 10/2011

This space reserved for office use

Submit to:
SECRETARY OF STATE
Government Filings Section
P O Box 12887
Austin, TX 78711-2887
512-463-6334



OATH OF OFFICE

Filing Fee: None

IN THE NAME AND BY THE AUTHORITY OF THE STATE OF TEXAS,

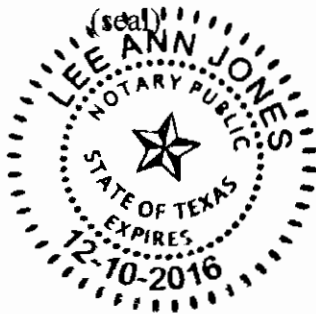
I, Alan Scarborough, do solemnly swear (or affirm), that I will faithfully execute the duties of the office of Panola County Reserve Deputy Constable, Precincts #1 & #4 of the State of Texas, and will to the best of my ability preserve, protect, and defend the Constitution and laws of the United States and of this State, so help me God.

Signature of Officer

State of Texas
County of Panola

Sworn to and subscribed before me this

14th day of January, 2013
31st day of December, 2012



Signature of Notary Public or Other Officer

Administering Oath

Printed or Typed Name



PANOLA COUNTY 2012 BUDGET AMENDMENT #25
January 28, 2013

ACCOUNT	ACCOUNT DESCRIPTION	AMOUNT	
GENERAL FUND			
REVENUES			
<u>100-330-41130</u>	STATE VOTER REGISTRATION	(6,000)	
<u>100-330-41165</u>	SAVNS PROGRAM	(2,091)	
<u>100-360-41020</u>	MISCELLANEOUS REVENUE	407	
			<u>(7,684)</u>
EXPENDITURES			
AIRPORT			
<u>100-407-54150</u>	PROFESSIONAL SERVICES	(93)	
<u>100-407-54430</u>	UTILITIES	93	
			0
MISC & NON-DEPT			
<u>100-409-54101</u>	COMPUTER SERVICES & SUPPLIES	(2,091)	
			(2,091)
ELECTIONS			
<u>100-490-55270</u>	FURNITURE & EQUIPMENT	(5,593)	
			(5,593)
SHERIFF			
<u>100-560-53920</u>	UNIFORMS	1,510	
<u>100-560-54430</u>	UTILITIES	(4,483)	
<u>100-560-54870</u>	ANIMAL CONTROL	2,973	
			0
CORRECTIONS/JAIL			
<u>100-570-53560</u>	REPAIR AND MAINTENANCE SUPPLIES	200	
<u>100-570-54082</u>	JAIL BOARD-PRISONERS FOOD ETC.	(200)	
			0
GRAND TOTAL GENERAL FUND			<u>(7,684)</u>

PANOLA COUNTY 2012 BUDGET AMENDMENT #25
January 28, 2013


ACCOUNT	ACCOUNT DESCRIPTION	AMOUNT
LIBRARY CONSTRUCTION FUND		
EXPENDITURES		
<u>910-650-54150</u>	PROFESSIONAL SERVICES ASBESTO INSPECTIC	(800)
<u>910-650-55270</u>	FURNITURE & EQUIPMENT	(120,000)
<u>910-650-55320</u>	CONSTRUCTION	(1,092,247)
<u>910-650-56160</u>	ARCHITECT FEES	(26,960)
<u>910-650-59640</u>	VIDEO TECHNOLOGY TELEPHONE & EQUIPME	<u>(78,262)</u>
GRAND TOTAL LIBRARY CONSTRUCTION FUND		<u><u>(1,318,269)</u></u>

PANOLA COUNTY
2012
BUDGET AMENDMENT #25


We hereby amend the Panola County Budget for the Fiscal Year 2012 as set forth above according to the procedures outlined under Vernons Texas Codes Annotated Local Government Code, Chapter 111, Subchapter A Sections 111.010 (d), 111.0106, 111.0107, 111.0108. A copy of this Order is to be filed with the County Clerk and Attached to the Budget originally adopted for 2012.

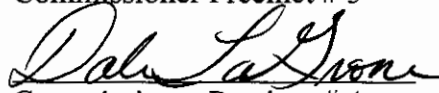
Signed on this 28th day of January, 2013.


County Judge

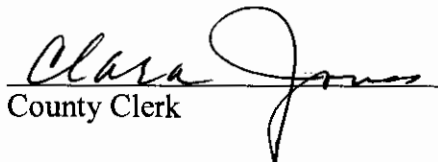

Commissioner Precinct # 1

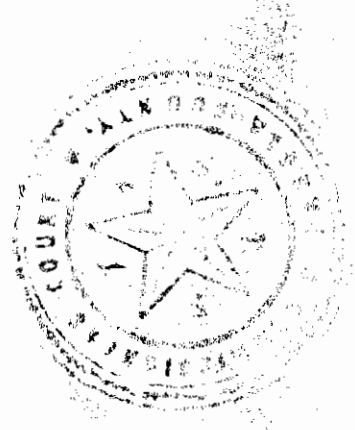

Commissioner Precinct # 3


Commissioner Precinct # 2


Commissioner Precinct # 4

Passed and approved by the Commissioners Court of Panola County on the 28th day of January, 2013 as the same appears on file in the office of the County Clerk of Panola County.


County Clerk





PANOLA COUNTY 2013 BUDGET AMENDMENT #2
January 28, 2013

ACCOUNT	ACCOUNT DESCRIPTION	AMOUNT	
GENERAL FUND			
EXPENDITURES			
MISC. & NON DEPARTMENTAL			
<u>100-409-51800</u>	BENEFITS TERMINATION PAY	5,000	
<u>100-409-52010</u>	SOCIAL SECURITY	386	
<u>100-409-52030</u>	RETIREMENT & DEATH BENEFIT	1,200	
<u>100-409-52070</u>	OPEB	465	
<u>100-409-54080</u>	CONTINGENCY	<u>(7,051)</u>	0
GRAND TOTAL GENERAL FUND			<u><u>0</u></u>
ROAD & BRIDGE FUND			
PCT.1			
EXPENDITURES			
<u>200-621-51060</u>	ROAD & BRIDGE EMPLOYEE WAGES	(6,300)	
<u>200-621-51800</u>	BENEFITS TERMINATION PAY	<u>6,300</u>	0
GRAND TOTAL ROAD & BRIDGE			<u><u>0</u></u>
GARY WSC			
REVENUE			
<u>874-330-41260</u>	FEDERAL GRANT	<u>210,463</u>	<u><u>210,463</u></u>
EXPENDITURES			
<u>874-888-55802</u>	WATER IMPROVEMENTS - CONSTRUCTION	159,950	
<u>874-888-55806</u>	WATER IMPROVEMENTS - ENGINEERING	27,463	
<u>874-888-55807</u>	REHAB SINGLE UNIT WATER	8,000	
<u>874-888-55808</u>	GENERAL ADMINISTRATION	<u>15,050</u>	210,463
GRAND TOTAL GARY WSC			<u><u>210,463</u></u>

PANOLA COUNTY 2013 BUDGET AMENDMENT #2
January 28, 2013

ACCOUNT	ACCOUNT DESCRIPTION	AMOUNT
LIBRARY CONSTRUCTION FUND		
REVENUES		
	CASH BALANCE	<u>1,317,471</u>
		<u><u>1,317,471</u></u>
EXPENDITURES		
<u>910-650-55270</u>	FURNITURE & EQUIPMENT	120,000
<u>910-650-55320</u>	CONSTRUCTION	1,092,248
<u>910-650-56160</u>	ARCHITECT FEES	26,961
<u>910-650-59640</u>	VIDEO TECHNOLOGY TELEPHONE & EQUIPME	<u>78,262</u>
		1,317,471
GRAND TOTAL LIBRARY CONSTRUCTION FUND		<u><u>1,317,471</u></u>

PANOLA COUNTY
2013
BUDGET AMENDMENT #2

We hereby amend the Panola County Budget for the Fiscal Year 2013 as set forth above according to the procedures outlined under Vernons Texas Codes Annotated Local Government Code, Chapter 111, Subchapter A Sections 111.010 (d), 111.0106, 111.0107, 111.0108. A copy of this Order is to be filed with the County Clerk and Attached to the Budget originally adopted for 2013.

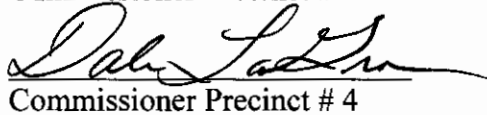
Signed on this 28th day of January, 2013.


County Judge

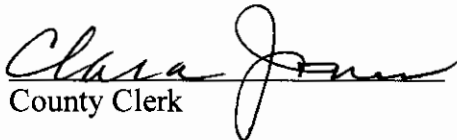

Commissioner Precinct # 1


Commissioner Precinct # 3


Commissioner Precinct # 2


Commissioner Precinct # 4

Passed and approved by the Commissioners Court of Panola County on the 28th day of January, 2013 as the same appears on file in the office of the County Clerk of Panola County.


County Clerk



PANOLA COUNTY OFFICIAL/EMPLOYEE
REQUEST FOR ATTENDANCE AT A CONFERENCE

APPROVED
01-28-2013

David L. Anderson,
County Judge

NAME: Colton Quick

POSITION: Detention Officer

DEPARTMENT: Panola County

DATE: 11-8-13

CONFERENCE: 24 hrs Hands On Jail School

LOCATION: Angelina Co Lufkin

DATES: 01-8-13 to 01-11-13

NUMBER OF DAYS OUT OF OFFICE FOR THIS CONFERENCE: 3

Does the conference meet your educational requirements for the year? y

If not, how much of your requirements will be met by this conference? _____

How much of your requirements have been met already, not counting this conference?

~~NONE~~

How many days have you been away from your job this year for conferences, not counting this conference? NONE

Do you have sufficient funds in your budget for this conference? _____

Write a short statement explaining the public purpose that will be met by your attendance at this conference: (continue on the back if necessary.)

ACTION

ITEMS

Payment Register

Vendor Number	Vendor Filed As					Total Vendor Amount
<u>1557</u>	AVFUEL CORP					20.00
Payment Type	Payment Number					
Check						
Payable Number	Description	Payable Date	Due Date	Discount Amount	Payable Amount	
<u>005176944</u>	FEBRUARY 2013 POS EQUIPMENT RENTAL	01/24/2013	01/24/2013	0.00	20.00	
Vendor Number	Vendor Filed As					Total Vendor Amount
<u>1511</u>	BADGEANDWALLET.COM					1,566.00
Payment Type	Payment Number					
Check						
Payable Number	Description	Payable Date	Due Date	Discount Amount	Payable Amount	
<u>U3020</u>	GST/HST NO. 873118616 - CUSTOM BADGES	12/31/2012	12/31/2012	0.00	1,482.00	
<u>U3062</u>	SMITH WARREN CUSTOM BADGE	12/31/2012	12/31/2012	0.00	84.00	
Vendor Number	Vendor Filed As					Total Vendor Amount
<u>1529</u>	BAXTER CLEAN CARE					715.54
Payment Type	Payment Number					
Check						
Payable Number	Description	Payable Date	Due Date	Discount Amount	Payable Amount	
<u>165546</u>	MISC. SUPPLIES	01/18/2013	01/18/2013	0.00	715.54	
Vendor Number	Vendor Filed As					Total Vendor Amount
<u>1351</u>	BOB BARKER COMPANY INC					1,203.90
Payment Type	Payment Number					
Check						
Payable Number	Description	Payable Date	Due Date	Discount Amount	Payable Amount	
<u>UT1000263516</u>	RESPERATORS	01/22/2013	01/22/2013	0.00	40.52	
<u>UT1000263568</u>	RAZORS,SHAMPOO,DEOD.,ENVELOPES,PAPER,PILLOWS	01/22/2013	01/22/2013	0.00	950.38	
<u>UT1256745</u>	PANTS	12/31/2012	12/31/2012	0.00	90.00	
<u>UT1257739</u>	EMBROIDERY	12/31/2012	12/31/2012	0.00	9.00	
<u>UT1259079</u>	POLO SHIRTS, PANTS	12/31/2012	12/31/2012	0.00	114.00	
Vendor Number	Vendor Filed As					Total Vendor Amount
<u>1901</u>	BUBBA COLEMAN					4,555.00
Payment Type	Payment Number					
Check						
Payable Number	Description	Payable Date	Due Date	Discount Amount	Payable Amount	
<u>01.26.12</u>	TRAVEL EXPENSE 1-20-12	12/31/2012	12/31/2012	0.00	69.00	
<u>10-01-12</u>	IMPOUNDMENT OF 5 DONKEYS 9-8-12	12/31/2012	12/31/2012	0.00	781.00	
<u>10-01-2012</u>	IMPOUNDMENT OF 1 DONKEY 9-16-12	12/31/2012	12/31/2012	0.00	349.00	
<u>11.14.12</u>	IMPOUNDMENT OF 5 DONKEYS 10-27-12	12/31/2012	12/31/2012	0.00	613.00	
<u>11.14.2012</u>	IMPOUNDMENT OF 1 DONKEY 9-28-12	12/31/2012	12/31/2012	0.00	424.00	
<u>11/14/12</u>	IMPOUNDMENT OF 1 DONKEY 09-16-12	12/31/2012	12/31/2012	0.00	354.00	
<u>11/14/2012</u>	IMPOUNDMENT OF 1 DONKEY 8-2-12	12/31/2012	12/31/2012	0.00	576.00	
<u>11-14-12</u>	IMPOUNDMENT OF 2 DONKEYS 10-9-12	12/31/2012	12/31/2012	0.00	630.00	
<u>11-14-2012</u>	IMPOUNDMENT OF 1 DONKEY 10-2-2012	12/31/2012	12/31/2012	0.00	315.00	
<u>12.05.11</u>	IMPOUNDMENT OF 2 HORSES 10-22-11	12/31/2012	12/31/2012	0.00	444.00	
Vendor Number	Vendor Filed As					Total Vendor Amount
<u>1579</u>	CAIN HARDWARE					7.09
Payment Type	Payment Number					
Check						
Payable Number	Description	Payable Date	Due Date	Discount Amount	Payable Amount	
<u>00547368</u>	WHITE SPRAY ENAMEL	12/31/2012	12/31/2012	0.00	2.24	
<u>00547455</u>	ALUMINUM WIRE TIES	12/31/2012	12/31/2012	0.00	4.85	

Payment Register

APPKT02114 - CC PC POOL 1-28-2013

Vendor Number	Vendor Filed As					Total Vendor Amount	
4169	CAIN HARDWARE & LUMBER					24.43	
		Payment Type	Payment Number		Payment Date	Payment Amount	
		Check			01/22/2013	24.43	
		Payable Number	Description	Payable Date	Due Date	Discount Amount	Payable Amount
		00548714	ALMOND AND WHITE COVER UP STOPS	01/21/2013	01/21/2013	0.00	14.83
		00548807	P O #56161 - PAINT, AIM-N-FLAME, RED ENAMEL	01/21/2013	01/21/2013	0.00	9.60
1128	CAR-TEX TRAILER COMPANY, INC.					734.50	
		Payment Type	Payment Number		Payment Date	Payment Amount	
		Check			01/22/2013	734.50	
		Payable Number	Description	Payable Date	Due Date	Discount Amount	Payable Amount
		137192	P O #56163 - TOLL BOX AND GAL TANK	01/18/2013	01/18/2013	0.00	1,147.00
		CM 137193	P O #56164 - CREDIT FOR 1 TANK	01/18/2013	01/18/2013	0.00	-412.50
0597	CASSITY JONES LUMBER					126.24	
		Payment Type	Payment Number		Payment Date	Payment Amount	
		Check			01/22/2013	126.24	
		Payable Number	Description	Payable Date	Due Date	Discount Amount	Payable Amount
		CA00133309-001	MISC. SUPPLIES	01/21/2013	01/21/2013	0.00	20.49
		CA00133623-001	ACCT#3353200 00001 - GENERIC ITEM, CAULK GUN	01/21/2013	01/21/2013	0.00	9.63
		CA00133626-001	ACCT#3353200 0001-BLACK SPRAY GLOSS	01/21/2013	01/21/2013	0.00	9.69
		CA00133819-001	ACCT#3353200 00001 - DRYWALL SCREWS,PUTTY	01/21/2013	01/21/2013	0.00	5.14
		CA00134137-001	MISC. SUPPLIES	01/21/2013	01/21/2013	0.00	81.29
2704	CDW GOVERNMENT, INC.					1,684.44	
		Payment Type	Payment Number		Payment Date	Payment Amount	
		Check			01/22/2013	1,684.44	
		Payable Number	Description	Payable Date	Due Date	Discount Amount	Payable Amount
		W079209	CUST #9189566 - PRINTER	01/21/2013	01/21/2013	0.00	271.22
		W092688	CUST#9189566 - KEYBOARD AND MOUSE	01/21/2013	01/21/2013	0.00	55.14
		W263351	CUST#9189566- TONER	01/21/2013	01/21/2013	0.00	362.82
		W311958	CUST#9189566 - COREL WORDPERFECT OFFICE	01/23/2013	01/23/2013	0.00	387.79
		W439571	BROTHER PRINTER	01/22/2013	01/22/2013	0.00	607.47
2190	CERTIFIED SERVICE CENTER					622.80	
		Payment Type	Payment Number		Payment Date	Payment Amount	
		Check			01/22/2013	622.80	
		Payable Number	Description	Payable Date	Due Date	Discount Amount	Payable Amount
		V62878-001	DISH MACHINE PRESSURE REGULATOR REPAIRS	01/21/2013	01/21/2013	0.00	208.00
		V62878-003	DISH MACHINE REPAIRS	01/22/2013	01/22/2013	0.00	414.80
0290	CHEVRON & TEXACO BUSINESS CARD SERVICES					128.50	
		Payment Type	Payment Number		Payment Date	Payment Amount	
		Check			01/22/2013	128.50	
		Payable Number	Description	Payable Date	Due Date	Discount Amount	Payable Amount
		STMT#36748385	FUEL PURCHASE	12/31/2012	12/31/2012	0.00	128.50
3371	CHRIS ERVIN					1,350.00	
		Payment Type	Payment Number		Payment Date	Payment Amount	
		Check			01/22/2013	1,350.00	
		Payable Number	Description	Payable Date	Due Date	Discount Amount	Payable Amount
		2002-C-0102CCL(REV-FELON)	2002-C-0102CCL(REV-FELONY), TX V SEAN CAMPBELL	01/22/2013	01/22/2013	0.00	450.00
		2002-C-0329CCL(FELONY)	2002-C-0329CCL(FELONY), TX V WADE GREEN	01/22/2013	01/22/2013	0.00	450.00
		J-885CCL(JUVENILE)	J-885CCL(JUVENILE), TX V ANTHONY MARNEY	01/22/2013	01/22/2013	0.00	450.00

Payment Register

Vendor Number	Vendor Filed As					Total Vendor Amount
<u>0148</u>	COMPLETE PRINTING & PUBLISHING CO					2,189.19
Payment Type	Payment Number				Payment Date	Payment Amount
Check					01/22/2013	2,189.19
Payable Number	Description	Payable Date	Due Date	Discount Amount	Payable Amount	
<u>77422</u>	2,500 LETTERHEAD - RON CLINTON	01/22/2013	01/22/2013	0.00	503.08	
<u>77424</u>	BUSINESS CARDS FOR SHERIFF RON CLINTON	01/21/2013	01/21/2013	0.00	145.00	
<u>77425</u>	BUSINESS CARDS - GENERIC/DEPUTY	01/21/2013	01/21/2013	0.00	435.00	
<u>77507</u>	500 BUSINESS CARDS - KEVIN LAKE	01/22/2013	01/22/2013	0.00	59.00	
<u>77572</u>	1,000 2 PART PROPERTY INVENTORY FORMS	01/22/2013	01/22/2013	0.00	271.28	
<u>77573</u>	1,000 INCIDENT REPORT FORMS	01/22/2013	01/22/2013	0.00	139.25	
<u>77613</u>	LETTERHEAD	01/21/2013	01/21/2013	0.00	158.50	
<u>77615</u>	LEATTERHEAD - RON CLINTON	01/22/2013	01/22/2013	0.00	478.08	
<u>1865</u>	CRAIG ELECTRIC					667.74
Payment Type	Payment Number				Payment Date	Payment Amount
Check					01/22/2013	667.74
Payable Number	Description	Payable Date	Due Date	Discount Amount	Payable Amount	
<u>7979</u>	REPLACE FLOURESCENT LIGHTING IN HOLDING CELLS	01/21/2013	01/21/2013	0.00	271.88	
<u>7982</u>	RELOCATE COMPUTER CABLE IN AUDITOR'S OFFICE	01/21/2013	01/21/2013	0.00	130.00	
<u>7993</u>	REPLACE BALLAST AND LAMP FOR FLAGPOLE LIGHT	01/22/2013	01/22/2013	0.00	265.86	
<u>2312</u>	DEBBIE'S BEST WATER STORE					203.25
Payment Type	Payment Number				Payment Date	Payment Amount
Check					01/22/2013	203.25
Payable Number	Description	Payable Date	Due Date	Discount Amount	Payable Amount	
<u>51567</u>	JANUARY 2013 COOLER RENTAL AND 5 GAL	01/22/2013	01/22/2013	0.00	203.25	
<u>1477</u>	DENNIS D. GOLDEN O.D. PC INC.					155.00
Payment Type	Payment Number				Payment Date	Payment Amount
Check					01/22/2013	155.00
Payable Number	Description	Payable Date	Due Date	Discount Amount	Payable Amount	
<u>BARERRA-PEREZ</u>	ANDRES BARERRA-PEREZ DOS 12/10/12	12/31/2012	12/31/2012	0.00	155.00	
<u>2748</u>	DISH NETWORK SERVICE, LLC					185.22
Payment Type	Payment Number				Payment Date	Payment Amount
Check					01/22/2013	185.22
Payable Number	Description	Payable Date	Due Date	Discount Amount	Payable Amount	
<u>DEC 4, 2012</u>	12/17/12 TO 01/16/2013 MONTHLY WEATHER SATELLITI	12/31/2012	12/31/2012	0.00	92.61	
<u>JAN 5, 2013</u>	01/17/13 TO 02/16/13 WEATHER SATELLITE	01/21/2013	01/21/2013	0.00	92.61	
<u>3603</u>	DOGGETT EQUIPMENT SERVICE, LLC					1,320.96
Payment Type	Payment Number				Payment Date	Payment Amount
Check					01/22/2013	1,320.96
Payable Number	Description	Payable Date	Due Date	Discount Amount	Payable Amount	
<u>K48609</u>	P O #56062 - REPAIRS TO #1205	01/21/2013	01/21/2013	0.00	1,320.96	
<u>1050</u>	DR. KEITH KEELING					500.00
Payment Type	Payment Number				Payment Date	Payment Amount
Check					01/22/2013	500.00
Payable Number	Description	Payable Date	Due Date	Discount Amount	Payable Amount	
<u>JAN 2013</u>	JAN 2013 MONTHLY LOCAL HEALTH AUTHORITY	01/21/2013	01/21/2013	0.00	500.00	

Vendor Number <u>1108</u>	Vendor Filed As EAST TEXAS MEDICAL CENTER CARTHAGE			Total Vendor Amount 8,274.16
Payment Type Check	Payment Number	Payment Date 01/22/2013	Payment Amount 8,274.16	
Payable Number	Description	Payable Date	Due Date	Discount Amount Payable Amount
<u>ALLISON GRANSON</u>	GRANSON E ALLISON DOS 10/29/12	12/31/2012	12/31/2012	0.00 520.05
<u>ANDRESBARREAPEREZ</u>	ANDRES BARREAPEREZ, DOS 11/26/12	12/31/2012	12/31/2012	0.00 229.37
<u>DERWICKCUMBO</u>	DERWICK CUMBO DOS 11/01/2012	12/31/2012	12/31/2012	0.00 6,891.25
<u>FERRISMICHAEL</u>	MICHEAL C. FERRIS DOS 11/15/12	12/31/2012	12/31/2012	0.00 229.37
<u>GOSSETTBILLYJ</u>	BILLY J. GOSSETT - DOS 11/16/12	12/31/2012	12/31/2012	0.00 174.75
<u>MORRISNOLANC</u>	NOLAN C. MORRIS DOS 11/02/12	12/31/2012	12/31/2012	0.00 229.37

Vendor Number <u>1545</u>	Vendor Filed As EAST TEXAS PSYCHOLOGICAL SERVICES			Total Vendor Amount 600.00
Payment Type Check	Payment Number	Payment Date 01/22/2013	Payment Amount 600.00	
Payable Number	Description	Payable Date	Due Date	Discount Amount Payable Amount
<u>01.02.13</u>	PSYCHOLOGICAL SCREENING; WYATT, GARRETT	01/21/2013	01/21/2013	0.00 600.00

Vendor Number <u>3007</u>	Vendor Filed As ECONO SIGN & BARRICADE, LLC			Total Vendor Amount 344.40
Payment Type Check	Payment Number	Payment Date 01/22/2013	Payment Amount 344.40	
Payable Number	Description	Payable Date	Due Date	Discount Amount Payable Amount
<u>10-906377</u>	P O #55965 - SIGNS	01/21/2013	01/21/2013	0.00 172.20
<u>10-906378</u>	P O #56060 - SIGNS	01/21/2013	01/21/2013	0.00 172.20

Vendor Number <u>4088</u>	Vendor Filed As ERIC SCOTT MCPHERSON			Total Vendor Amount 1,000.00
Payment Type Check	Payment Number	Payment Date 01/22/2013	Payment Amount 1,000.00	
Payable Number	Description	Payable Date	Due Date	Discount Amount Payable Amount
<u>2011-086</u>	2011-086, ITO AALIYAH TRAN	01/18/2013	01/18/2013	0.00 1,000.00

Vendor Number <u>1117</u>	Vendor Filed As ETMC EMS			Total Vendor Amount 77.25
Payment Type Check	Payment Number	Payment Date 01/22/2013	Payment Amount 77.25	
Payable Number	Description	Payable Date	Due Date	Discount Amount Payable Amount
<u>264</u>	JANUARY 2013 TOWER SITE BILLING	01/22/2013	01/22/2013	0.00 77.25

Vendor Number <u>4520</u>	Vendor Filed As EXCEL FORD LINCOLN MERCURY			Total Vendor Amount 50.20
Payment Type Check	Payment Number	Payment Date 01/22/2013	Payment Amount 50.20	
Payable Number	Description	Payable Date	Due Date	Discount Amount Payable Amount
<u>107922</u>	HOUSING - PARTS	01/22/2013	01/22/2013	0.00 50.20

Vendor Number <u>1857</u>	Vendor Filed As FARMERS STATE BANK - CARTHAGE			Total Vendor Amount 15.00
Payment Type Check	Payment Number	Payment Date 01/22/2013	Payment Amount 15.00	
Payable Number	Description	Payable Date	Due Date	Discount Amount Payable Amount
<u>BOX 01353</u>	SAFE DEPOSIT BOX RENT - BOX #01353	01/21/2013	01/21/2013	0.00 15.00

Vendor Number <u>0708</u>	Vendor Filed As FIRE AND SAFETY EQUIPMENT			Total Vendor Amount 255.95
Payment Type Check	Payment Number	Payment Date 01/22/2013	Payment Amount 255.95	
Payable Number	Description	Payable Date	Due Date	Discount Amount Payable Amount
<u>10584</u>	RECERTIFICATION AND A NEW EXTING. 5 #ABC	01/21/2013	01/21/2013	0.00 255.95

Payment Register

Vendor Number	Vendor Filed As					Total Vendor Amount
<u>1130</u>	FISH & STILL EQUIPMENT					75.70
Payment Type	Payment Number					
Check						
Payable Number	Description	Payable Date	Due Date	Discount Amount	Payable Amount	
<u>113710</u>	ACCT#406255 - P O #55964 - BALL JOINT	01/21/2013	01/21/2013	0.00	240.00	
<u>CM 113842</u>	CM 113842 - CREDIT ON ITEMS	01/23/2013	01/23/2013	0.00	-164.30	
<u>2828</u>	FISH & STILL EQUIPMENT					70.53
Payment Type	Payment Number					
Check						
Payable Number	Description	Payable Date	Due Date	Discount Amount	Payable Amount	
<u>114265</u>	ACCT#501693- P O #55970 - SEAL KITS	01/21/2013	01/21/2013	0.00	70.53	
<u>1564</u>	FLOWERS BAKING CO. OF TYLER					132.79
Payment Type	Payment Number					
Check						
Payable Number	Description	Payable Date	Due Date	Discount Amount	Payable Amount	
<u>94572901</u>	FOOD FOR JAIL	01/21/2013	01/21/2013	0.00	58.52	
<u>94573085</u>	BREAD FOR JAIL	01/21/2013	01/21/2013	0.00	74.27	
<u>1575</u>	FRANK R. LANGLEY, JR.					381.38
Payment Type	Payment Number					
Check						
Payable Number	Description	Payable Date	Due Date	Discount Amount	Payable Amount	
<u>JAN 2013</u>	TRAVEL REIMB. FOR SCHOOL IN AUSTIN 1/8-/1/11, 2013	01/21/2013	01/21/2013	0.00	381.38	
<u>2273</u>	GALLS, LLC					19.99
Payment Type	Payment Number					
Check						
Payable Number	Description	Payable Date	Due Date	Discount Amount	Payable Amount	
<u>000300274</u>	ACCT#5290424 - NYLON SPEEDLOADER POUCH	01/22/2013	01/22/2013	0.00	19.99	
<u>1178</u>	GATEWAY TIRE & SERVICE CENTER					270.19
Payment Type	Payment Number					
Check						
Payable Number	Description	Payable Date	Due Date	Discount Amount	Payable Amount	
<u>1501004487</u>	BRAKE ROTORS, LABOR, BRAKE CLEAN	01/21/2013	01/21/2013	0.00	229.20	
<u>1501008945</u>	OIL CHANGE	01/22/2013	01/22/2013	0.00	40.99	
<u>4266</u>	GT DISTRIBUTORS INC.					722.75
Payment Type	Payment Number					
Check						
Payable Number	Description	Payable Date	Due Date	Discount Amount	Payable Amount	
<u>INV0427636</u>	DEFENSE SPRAYS, STREAMLIGHT STINGER BATTERIES	01/21/2013	01/21/2013	0.00	722.75	
<u>3949</u>	HOME PLUS					52.12
Payment Type	Payment Number					
Check						
Payable Number	Description	Payable Date	Due Date	Discount Amount	Payable Amount	
<u>CA004558</u>	IMPERIAL TEXTURE	01/22/2013	01/22/2013	0.00	52.12	

Payment Register

APPKT02114 - CC PC POOL 1-28-2013

Vendor Number <u>1478</u>	Vendor Filed As JAMES KING					Total Vendor Amount 140.00
Payment Type Check	Payment Number		Payment Date 01/22/2013	Payment Amount 140.00		
Payable Number <u>422715</u>	Description WINDOW TINT 2008 BLACK CHEVY	Payable Date 01/21/2013	Due Date 01/21/2013	Discount Amount 0.00	Payable Amount 140.00	

Vendor Number <u>2897</u>	Vendor Filed As JASON PHILLIPS MDPA					Total Vendor Amount 525.00
Payment Type Check	Payment Number		Payment Date 01/22/2013	Payment Amount 525.00		
Payable Number <u>1759</u>	Description KRISTEE RITTER 1/4/2013	Payable Date 01/21/2013	Due Date 01/21/2013	Discount Amount 0.00	Payable Amount 105.00	
<u>1760</u>	MATT HOLLIE - 1/4/2013	01/21/2013	01/21/2013	0.00	105.00	
<u>1761</u>	JESSE JONES - 1/4/2013	01/21/2013	01/21/2013	0.00	105.00	
<u>1762</u>	JAYSON COOKE - 1/4/2013	01/21/2013	01/21/2013	0.00	105.00	
<u>1763</u>	MIKE FERRIS - 1/14/2013	01/21/2013	01/21/2013	0.00	105.00	

Vendor Number <u>1578</u>	Vendor Filed As JOHN F. NIELSEN, M.D.					Total Vendor Amount 85.00
Payment Type Check	Payment Number		Payment Date 01/22/2013	Payment Amount 85.00		
Payable Number <u>AVERY_SHELLY</u>	Description SHELLY AVERY DOS 1/7/2013	Payable Date 01/22/2013	Due Date 01/22/2013	Discount Amount 0.00	Payable Amount 85.00	

Vendor Number <u>3615</u>	Vendor Filed As JUST IN TIME SANITATION SERVICES					Total Vendor Amount 140.00
Payment Type Check	Payment Number		Payment Date 01/22/2013	Payment Amount 140.00		
Payable Number <u>47517</u>	Description DECEMBER 2012 PORTABLE TOILET RENTAL	Payable Date 12/31/2012	Due Date 12/31/2012	Discount Amount 0.00	Payable Amount 140.00	

Vendor Number <u>3132</u>	Vendor Filed As KATIE NIELSEN					Total Vendor Amount 1,450.00
Payment Type Check	Payment Number		Payment Date 01/22/2013	Payment Amount 1,450.00		
Payable Number <u>2011-C-0259-0261DC(REV)</u>	Description 2011-C-0259-0261DC(REV) - TX V RICHARD HEWITT	Payable Date 01/21/2013	Due Date 01/21/2013	Discount Amount 0.00	Payable Amount 1,000.00	
<u>2012-C-0249CCL(FELONY)</u>	2012-C-0249CCL(FELONY) - TX V RICHARD HEWITT	01/21/2013	01/21/2013	0.00	450.00	

Vendor Number <u>4423</u>	Vendor Filed As KIRBY RESTAURANT & CHEMICAL SUPPLY					Total Vendor Amount 420.33
Payment Type Check	Payment Number		Payment Date 01/22/2013	Payment Amount 420.33		
Payable Number <u>078547</u>	Description MISC. SUPPLY ITEMS	Payable Date 01/21/2013	Due Date 01/21/2013	Discount Amount 0.00	Payable Amount 420.33	

Vendor Number <u>3795</u>	Vendor Filed As LAURA M. CARPENTER					Total Vendor Amount 900.00
Payment Type Check	Payment Number		Payment Date 01/22/2013	Payment Amount 900.00		
Payable Number <u>2012-C-0001CCL(FELONY)</u>	Description 2012-C-0001CCL(FELONY) - TX V DANNY LINDSEY	Payable Date 01/21/2013	Due Date 01/21/2013	Discount Amount 0.00	Payable Amount 450.00	
<u>27729-C-CCL(MISD)</u>	27729-C-CCL(MISD) - TX V RUSSELL SHEROW	01/21/2013	01/21/2013	0.00	450.00	

Vendor Number <u>4110</u>	Vendor Filed As LAW OFFICE OF CHARLES C. DICKERSON					Total Vendor Amount 1,352.20
Payment Type Check	Payment Number		Payment Date 01/22/2013	Payment Amount 1,352.20		
Payable Number <u>2001-C-229-DC (FELONY)</u>	Description 2001-C-229-DC (FELONY) - TX V D. S. MCDANIEL	Payable Date 01/21/2013	Due Date 01/21/2013	Discount Amount 0.00	Payable Amount 1,352.20	

Payment Register

Vendor Number	Vendor Filed As					Total Vendor Amount
<u>0913</u>	LEGAL DIRECTORIES PUBLISHING CO., INC.					82.50
Payment Type	Payment Number			Payment Date	Payment Amount	
Check				01/22/2013	82.50	
Payable Number	Description	Payable Date	Due Date	Discount Amount	Payable Amount	
<u>2013 RENEWAL</u>	2013 RENEWAL - TEXAS LEGAL DIRECTORY	10/31/2012	10/31/2012	0.00	68.00	
<u>INV#2013 RENEWAL</u>	S & H FOR 2013 TEXAS LEGAL DIRECTORY	01/24/2013	01/24/2013	0.00	14.50	
<u>1518</u>	LONE STAR OUTFITTERS					256.83
Payment Type	Payment Number			Payment Date	Payment Amount	
Check				01/22/2013	256.83	
Payable Number	Description	Payable Date	Due Date	Discount Amount	Payable Amount	
<u>2005</u>	AMMO	01/21/2013	01/21/2013	0.00	256.83	
<u>1248</u>	MHC KENWORTH-LONGVIEW					308.80
Payment Type	Payment Number			Payment Date	Payment Amount	
Check				01/22/2013	308.80	
Payable Number	Description	Payable Date	Due Date	Discount Amount	Payable Amount	
<u>T63560286349</u>	P O #56106 - LATCH ASSY	01/21/2013	01/21/2013	0.00	308.80	
<u>1580</u>	MR. ELVY ADAMS					16.50
Payment Type	Payment Number			Payment Date	Payment Amount	
Check				01/24/2013	16.50	
Payable Number	Description	Payable Date	Due Date	Discount Amount	Payable Amount	
<u>10.1.12</u>	REIMBURSEMENTFOR PROSIGNS INVOICE	12/31/2012	12/31/2012	0.00	16.50	
<u>2275</u>	OLMSTED-KIRK PAPER COMPANY					1,851.02
Payment Type	Payment Number			Payment Date	Payment Amount	
Check				01/22/2013	1,851.02	
Payable Number	Description	Payable Date	Due Date	Discount Amount	Payable Amount	
<u>2883511 CB</u>	CHARGEBACK, CUST#32250	12/31/2012	12/31/2012	0.00	168.90	
<u>3029657</u>	MISC. SUPPLY ITEMS	01/21/2013	01/21/2013	0.00	1,267.27	
<u>3033109</u>	SPECIAL HAND DETERGENT	01/21/2013	01/21/2013	0.00	72.04	
<u>3033950</u>	NYLON HAR NETS, METAL SHELVING	01/22/2013	01/22/2013	0.00	355.85	
<u>3033952</u>	LINERS	01/22/2013	01/22/2013	0.00	59.00	
<u>CM 3033110</u>	CANCELLED SPECIAL HAND DETERGENT ORD#TR2X4/OO	01/21/2013	01/21/2013	0.00	-72.04	
<u>2110</u>	OMNIBASE SERVICES OF TEXAS, LP					300.00
Payment Type	Payment Number			Payment Date	Payment Amount	
Check				01/22/2013	300.00	
Payable Number	Description	Payable Date	Due Date	Discount Amount	Payable Amount	
<u>4TH_QTR 2012</u>	OCT-DEC 2012 FAILURE TO APPEAR FEES	12/31/2012	12/31/2012	0.00	132.00	
<u>4TH_QTR. 2012</u>	OCT-DEC 2012 FAILURE TO APPEAR FEES	12/31/2012	12/31/2012	0.00	168.00	
<u>1949</u>	PANOLA COUNTY HISTORICAL & GENEALOGICAL ASSN					843.35
Payment Type	Payment Number			Payment Date	Payment Amount	
Check				01/24/2013	843.35	
Payable Number	Description	Payable Date	Due Date	Discount Amount	Payable Amount	
<u>08.10.12</u>	REIMB. FOR SWEPCO 07/10/12 TO 08/10/12	12/31/2012	12/31/2012	0.00	390.06	
<u>09.11.12</u>	REIMB. FOR SWEPCO 08/10/12 TO 09/11/12	12/31/2012	12/31/2012	0.00	191.98	
<u>10.09.12</u>	REIMB. FOR SWEPCO 09/11/12 TO 10/09/12	12/31/2012	12/31/2012	0.00	97.35	
<u>11.08.12</u>	REIMB. FOR SWEPCO 10/09/12 TO 11/08/12	12/31/2012	12/31/2012	0.00	88.82	
<u>12.10.12</u>	REIMB. FOR SWEPCO 11/08/12 TO 12/10/12	12/31/2012	12/31/2012	0.00	75.14	

Payment Register

APPKT02114 - CC PC POOL 1-28-2013

Vendor Number	Vendor Filed As					Total Vendor Amount	
2554	PANOLA COUNTY PLUMBING					244.04	
		Payment Type	Payment Number	Payment Date	Payment Amount		
		Check		01/22/2013	244.04		
		Payable Number	Description	Payable Date	Due Date	Discount Amount	Payable Amount
		6016	WATER LINE REPAIR TO WELL SYSTEM	01/21/2013	01/21/2013	0.00	144.04
		6042	UNSTOPPED LAVATORY AND TIGHTENED PACKING	01/22/2013	01/22/2013	0.00	100.00
1384	PRITCHARD & ABBOTT, INC.					40,904.25	
		Payment Type	Payment Number	Payment Date	Payment Amount		
		Check		01/22/2013	40,904.25		
		Payable Number	Description	Payable Date	Due Date	Discount Amount	Payable Amount
		JAN-MAR 2013	ACCT#2-0020 - JAN-MAR 2013 INSTALLMENT	01/21/2013	01/21/2013	0.00	40,904.25
0170	PUBLIC AGENCY TRAINING COUNCIL, INC.					295.00	
		Payment Type	Payment Number	Payment Date	Payment Amount		
		Check		01/22/2013	295.00		
		Payable Number	Description	Payable Date	Due Date	Discount Amount	Payable Amount
		159676	KEVIN LAKE-SEMINAR FEE-1/23/13 - 1/25/13	01/21/2013	01/21/2013	0.00	295.00
1503	PUMP TECH SOLUTIONS, L.L.C.					1,628.19	
		Payment Type	Payment Number	Payment Date	Payment Amount		
		Check		01/22/2013	1,628.19		
		Payable Number	Description	Payable Date	Due Date	Discount Amount	Payable Amount
		2439	FUEL TANK REPAIRS	01/21/2013	01/21/2013	0.00	1,628.19
3956	REEDER'S AUTO REPAIR					618.00	
		Payment Type	Payment Number	Payment Date	Payment Amount		
		Check		01/22/2013	618.00		
		Payable Number	Description	Payable Date	Due Date	Discount Amount	Payable Amount
		4336	VEHICLE REPAIRS-2005 FORD F150	01/21/2013	01/21/2013	0.00	618.00
1390	SC FUELS					23,343.07	
		Payment Type	Payment Number	Payment Date	Payment Amount		
		Check		01/22/2013	23,343.07		
		Payable Number	Description	Payable Date	Due Date	Discount Amount	Payable Amount
		2115310	FUEL PURCHASED 1/9/13	01/18/2013	01/18/2013	0.00	23,343.07
2172	SCOTT-MERRIMAN, INC.					483.89	
		Payment Type	Payment Number	Payment Date	Payment Amount		
		Check		01/22/2013	483.89		
		Payable Number	Description	Payable Date	Due Date	Discount Amount	Payable Amount
		049501	CD CIVIL DOCKET LEAVES	01/21/2013	01/21/2013	0.00	483.89
1182	SEARS COMMERCIAL ONE					1,694.89	
		Payment Type	Payment Number	Payment Date	Payment Amount		
		Check		01/22/2013	1,694.89		
		Payable Number	Description	Payable Date	Due Date	Discount Amount	Payable Amount
		T077311	ACCT#5405 5340 1037 3908 - 8 LAWN MOWERS	01/18/2013	01/18/2013	0.00	1,379.92
		T933156	TOOL BOX AND SOCKETS ACCT#5405 5340 1037 3908	12/31/2012	12/31/2012	0.00	314.97

Payment Register

Vendor Number	Vendor Filed As					Total Vendor Amount
<u>2600</u>	SENTRY SECURITY FASTNERS, INC					31.34
Payment Type	Payment Number			Payment Date	Payment Amount	
Check				01/22/2013	31.34	
Payable Number	Description	Payable Date	Due Date	Discount Amount	Payable Amount	
<u>58303</u>	8 TBIT-T20 TORX T/R BIT 1/4" SHANKS	01/21/2013	01/21/2013	0.00	31.34	
<u>1573</u>	SIDDONS-MARTIN EMERGENCY GROUP, LLC					2,618.75
Payment Type	Payment Number			Payment Date	Payment Amount	
Check				01/22/2013	2,618.75	
Payable Number	Description	Payable Date	Due Date	Discount Amount	Payable Amount	
<u>EVS1392</u>	REAR CONSOLE UNIT CHEVY TAHOE	12/31/2012	12/31/2012	0.00	2,618.75	
<u>2495</u>	SOUTHWESTERN ELECTRIC POWER COMPANY					35.95
Payment Type	Payment Number			Payment Date	Payment Amount	
Check				01/22/2013	35.95	
Payable Number	Description	Payable Date	Due Date	Discount Amount	Payable Amount	
<u>INV0023215</u>	ACCT#961-376-171-0-4, 12/10/12 - 01/12/12	12/31/2012	12/31/2012	0.00	35.95	
<u>2505</u>	SOUTHWESTERN ELECTRIC POWER COMPANY					1,204.17
Payment Type	Payment Number			Payment Date	Payment Amount	
Check				01/22/2013	1,204.17	
Payable Number	Description	Payable Date	Due Date	Discount Amount	Payable Amount	
<u>01.14.13</u>	ACCT#961-279-171-0-0- 12/10/12 TO 1/12/13	01/21/2013	01/21/2013	0.00	1,204.17	
<u>2521</u>	SOUTHWESTERN ELECTRIC POWER COMPANY					1,992.37
Payment Type	Payment Number			Payment Date	Payment Amount	
Check				01/22/2013	1,992.37	
Payable Number	Description	Payable Date	Due Date	Discount Amount	Payable Amount	
<u>01.14.13</u>	ACCT#968-780-271-0-9, 12.10.12 TO 01.12.13	01/18/2013	01/18/2013	0.00	1,992.37	
<u>2576</u>	SOUTHWESTERN ELECTRIC POWER COMPANY					1,105.44
Payment Type	Payment Number			Payment Date	Payment Amount	
Check				01/22/2013	1,105.44	
Payable Number	Description	Payable Date	Due Date	Discount Amount	Payable Amount	
<u>01.14.13</u>	ACCT#965-832-625-0-4, 12/10/12 TO 01/12/13	01/18/2013	01/18/2013	0.00	1,105.44	
<u>3869</u>	SOUTHWESTERN ELECTRIC POWER COMPANY					2,930.75
Payment Type	Payment Number			Payment Date	Payment Amount	
Check				01/22/2013	2,930.75	
Payable Number	Description	Payable Date	Due Date	Discount Amount	Payable Amount	
<u>01.14.13</u>	ACCT#968-113-315-1-9 - 12/10/12 TO 01/12/13	01/21/2013	01/21/2013	0.00	2,930.75	
<u>1402</u>	SYSCO RESOURCES SERVICES, LLC					5,474.04
Payment Type	Payment Number			Payment Date	Payment Amount	
Check				01/24/2013	5,474.04	
Payable Number	Description	Payable Date	Due Date	Discount Amount	Payable Amount	
<u>600942330</u>	FOOD FOR DETENTION CENTER	12/31/2012	12/31/2012	0.00	128.56	
<u>600942506</u>	FOOD FOR DETENTION CENTER	12/31/2012	12/31/2012	0.00	552.43	
<u>600942509</u>	FOOD FOR DETENTION CENTER	12/31/2012	12/31/2012	0.00	1,462.63	
<u>600942510</u>	FOOD FOR DETENTION CENTER	12/31/2012	12/31/2012	0.00	533.03	
<u>600942511</u>	FOOD FOR DETENTION CENTER	12/31/2012	12/31/2012	0.00	250.29	
<u>601021077</u>	FOOD FOR DETENTION CENTER	01/24/2013	01/24/2013	0.00	52.87	
<u>601021079</u>	FOOD FOR DETENTION CENTER	01/24/2013	01/24/2013	0.00	503.74	

Payment Register

APPKT02114 - CC PC POOL 1-28-2013

Vendor Number	Vendor Filed As						Total Vendor Amount
<u>1968</u>	TED'S SAW SHOP						401.25
Payment Type	Payment Number					Payment Date	Payment Amount
Check						01/22/2013	401.25
Payable Number	Description	Payable Date	Due Date	Discount Amount	Payable Amount		
<u>028239</u>	P O #56157 - MISC. SUPPLIES	01/21/2013	01/21/2013	0.00	135.25		
<u>028247</u>	P O #55971 - BARS AND FILES	01/21/2013	01/21/2013	0.00	129.30		
<u>028251</u>	MISC. SUPPLIES/REPAIR/LABOR	01/21/2013	01/21/2013	0.00	136.70		
<u>0062</u>	TEECO SAFETY, INC.						1,935.33
Payment Type	Payment Number					Payment Date	Payment Amount
Check						01/24/2013	1,935.33
Payable Number	Description	Payable Date	Due Date	Discount Amount	Payable Amount		
<u>108271</u>	BALLISTIC VEST/CARRIERS,GLOVES,HOLSTER,ETC.	12/31/2012	12/31/2012	0.00	1,759.83		
<u>108861</u>	CHROME FRICTION LOCK W/FOAM HANDLE	01/22/2013	01/22/2013	0.00	97.50		
<u>108893</u>	STREAMLIGHT BATTERY STICK ANDLED LAMP MODULE	01/22/2013	01/22/2013	0.00	56.80		
<u>108922</u>	LARGE GOLD LT BAR SET	01/22/2013	01/22/2013	0.00	21.20		
<u>2709</u>	TEXAS JUSTICE COURT JUDGES ASSOCIATION						75.00
Payment Type	Payment Number					Payment Date	Payment Amount
Check						01/22/2013	75.00
Payable Number	Description	Payable Date	Due Date	Discount Amount	Payable Amount		
<u>2013</u>	LORA J. TAYLOR 2013 MEMBERSHIP APPLICATION FEE	01/21/2013	01/21/2013	0.00	75.00		
<u>1315</u>	TRACTOR SUPPLY CREDIT PLAN						83.98
Payment Type	Payment Number					Payment Date	Payment Amount
Check						01/22/2013	83.98
Payable Number	Description	Payable Date	Due Date	Discount Amount	Payable Amount		
<u>100173255</u>	ACCT#6035 3012 0330 7937, PROPLAN 35LB SHRD L&R	12/31/2012	12/31/2012	0.00	41.99		
<u>200105387</u>	PROPLAN 35LB SHRD L&R	12/31/2012	12/31/2012	0.00	41.99		
<u>1029</u>	TRI-STATE FASTENERS & SUPPLY						629.28
Payment Type	Payment Number					Payment Date	Payment Amount
Check						01/22/2013	629.28
Payable Number	Description	Payable Date	Due Date	Discount Amount	Payable Amount		
<u>216684</u>	P O #56016 - NUTS,BOLTS,WASHER,LOCKS	01/21/2013	01/21/2013	0.00	629.28		
<u>4036</u>	TX DEPARTMENT OF INFORMATION RESOURCES						1,879.29
Payment Type	Payment Number					Payment Date	Payment Amount
Check						01/24/2013	1,879.29
Payable Number	Description	Payable Date	Due Date	Discount Amount	Payable Amount		
<u>13120826N</u>	H22000 - 12/01/12 TO 12/31/12	12/31/2012	12/31/2012	0.00	1,879.29		
<u>1164</u>	TYLER TECHNOLOGIES, INC.						11,076.00
Payment Type	Payment Number					Payment Date	Payment Amount
Check						01/22/2013	11,076.00
Payable Number	Description	Payable Date	Due Date	Discount Amount	Payable Amount		
<u>025-60157</u>	CUST #44175 -JAN-MAR 2013 USER FEE AND HOSTING FE	01/21/2013	01/21/2013	0.00	11,076.00		

Payment Register

Vendor Number	Vendor Filed As					Total Vendor Amount
<u>0235</u>	TYSON FOODS, INC.					156.00
		Payment Type	Payment Number	Payment Date	Payment Amount	
		Check		01/24/2013	156.00	
		Payable Number	Description	Payable Date	Due Date	Discount Amount Payable Amount
		<u>46838</u>	LEG QUARTERS FOR DETENTION CENTER	01/24/2013	01/24/2013	0.00 156.00
<u>0931</u>	UNIFIRST HOLDINGS, INC.					18.10
		Payment Type	Payment Number	Payment Date	Payment Amount	
		Check		01/22/2013	18.10	
		Payable Number	Description	Payable Date	Due Date	Discount Amount Payable Amount
		<u>826 0686386</u>	P O #56025 - RUGS	01/21/2013	01/21/2013	0.00 18.10
<u>0674</u>	US POSTAL SERVICE					325.00
		Payment Type	Payment Number	Payment Date	Payment Amount	
		Check		01/22/2013	325.00	
		Payable Number	Description	Payable Date	Due Date	Discount Amount Payable Amount
		<u>702410424</u>	CUST#G0003219, REF#BQ1108 M020113-FEB 2013 RENT	01/21/2013	01/21/2013	0.00 325.00
<u>1185</u>	US SCRIPT, INC.					3,360.70
		Payment Type	Payment Number	Payment Date	Payment Amount	
		Check		01/22/2013	3,360.70	
		Payable Number	Description	Payable Date	Due Date	Discount Amount Payable Amount
		<u>345210</u>	IHCP PRESCRIPTIONS 12/1/15/2012-GROUP #15200	12/31/2012	12/31/2012	0.00 2,103.81
		<u>345211</u>	DETENTION CENTER RXS 12/1/12 TO 12/15/12	12/31/2012	12/31/2012	0.00 366.49
		<u>346455</u>	INCP PRESCRIPTIONS 12/16/12 TO 12/31/12	12/31/2012	12/31/2012	0.00 754.01
		<u>346456</u>	DETENTION CENTER RXS 12/16/12 TO 12/31/12	12/31/2012	12/31/2012	0.00 136.39
<u>1365</u>	VERIZON WIRELESS					1,344.83
		Payment Type	Payment Number	Payment Date	Payment Amount	
		Check		01/22/2013	1,344.83	
		Payable Number	Description	Payable Date	Due Date	Discount Amount Payable Amount
		<u>6832522877</u>	ACCT #723307446-00001 - DEC 2-JAN 1, 2013	12/31/2012	12/31/2012	0.00 1,344.83
<u>1399</u>	VERIZON WIRELESS					51.29
		Payment Type	Payment Number	Payment Date	Payment Amount	
		Check		01/24/2013	51.29	
		Payable Number	Description	Payable Date	Due Date	Discount Amount Payable Amount
		<u>6836800944</u>	ACCT#313439941-00004, DEC 10 - JAN 09, 2013	12/31/2012	12/31/2012	0.00 51.29
<u>3883</u>	VERIZON WIRELESS					97.21
		Payment Type	Payment Number	Payment Date	Payment Amount	
		Check		01/22/2013	97.21	
		Payable Number	Description	Payable Date	Due Date	Discount Amount Payable Amount
		<u>6828460513</u>	ACCT#913519786-00001 - NOV 21 - DEC 20, 2012	12/31/2012	12/31/2012	0.00 97.21
<u>3885</u>	VERIZON WIRELESS					85.75
		Payment Type	Payment Number	Payment Date	Payment Amount	
		Check		01/22/2013	85.75	
		Payable Number	Description	Payable Date	Due Date	Discount Amount Payable Amount
		<u>6828440925</u>	ACCT#313301306-00001 - NOV 24 - DEC 20, 2012	12/31/2012	12/31/2012	0.00 85.75

Vendor Number	Vendor Filed As					Total Vendor Amount
<u>3887</u>	VERIZON WIRELESS					51.29
Payment Type	Payment Number					Payment Date Payment Amount
Check						01/24/2013 51.29
Payable Number	Description	Payable Date	Due Date	Discount Amount	Payable Amount	
<u>6836800943</u>	ACCT#313439941-00003, DEC 10 - JAN 09, 2013	12/31/2012	12/31/2012	0.00	51.29	
<u>1063</u>	VIP TECHNOLOGIES, INC.					375.00
Payment Type	Payment Number					Payment Date Payment Amount
Check						01/22/2013 375.00
Payable Number	Description	Payable Date	Due Date	Discount Amount	Payable Amount	
<u>00021643</u>	CHANGE RINGING ON PHONES-TREASURER AND SO	01/21/2013	01/21/2013	0.00	375.00	
<u>1078</u>	WEST PAYMENT CENTER					83.00
Payment Type	Payment Number					Payment Date Payment Amount
Check						01/22/2013 83.00
Payable Number	Description	Payable Date	Due Date	Discount Amount	Payable Amount	
<u>826325783</u>	ACCT#1000629466 - DEC 2012	12/31/2012	12/31/2012	0.00	83.00	
<u>1088</u>	WEST PAYMENT CENTER					1,251.18
Payment Type	Payment Number					Payment Date Payment Amount
Check						01/22/2013 1,251.18
Payable Number	Description	Payable Date	Due Date	Discount Amount	Payable Amount	
<u>826503886</u>	ACCT#1003176982-DECEMBER 2012	12/31/2012	12/31/2012	0.00	1,251.18	
<u>1592</u>	WEST PAYMENT CENTER					169.50
Payment Type	Payment Number					Payment Date Payment Amount
Check						01/22/2013 169.50
Payable Number	Description	Payable Date	Due Date	Discount Amount	Payable Amount	
<u>826406127</u>	ACCT#1000312272 - DECEMBER 2012	12/31/2012	12/31/2012	0.00	169.50	
<u>0279</u>	WEX BANK					119.26
Payment Type	Payment Number					Payment Date Payment Amount
Check						01/22/2013 119.26
Payable Number	Description	Payable Date	Due Date	Discount Amount	Payable Amount	
<u>31522384</u>	FUEL PURCHASE - ACCT#3698005687	12/31/2012	12/31/2012	0.00	119.26	
<u>4213</u>	XEROX CORPORATION					1,162.57
Payment Type	Payment Number					Payment Date Payment Amount
Check						01/22/2013 1,162.57
Payable Number	Description	Payable Date	Due Date	Discount Amount	Payable Amount	
<u>065727806</u>	CUST #713756351 - DEC 2012	12/31/2012	12/31/2012	0.00	150.08	
<u>065727810</u>	CUST #715495016 - DEC 2012	12/31/2012	12/31/2012	0.00	218.11	
<u>065727811</u>	CUST #715495024 - DEC 2012	12/31/2012	12/31/2012	0.00	35.04	
<u>065727812</u>	CUST #715495032 - DEC 2012	12/31/2012	12/31/2012	0.00	39.47	
<u>065727815</u>	CUST #716774559 - DEC 2012	12/31/2012	12/31/2012	0.00	169.05	
<u>065727816</u>	CUST #716774609 - DEC 2012	12/31/2012	12/31/2012	0.00	154.65	
<u>065727817</u>	CUST #716774617 - DEC 2012	12/31/2012	12/31/2012	0.00	130.65	
<u>065727818</u>	CUST #716774641 - DECEMBER 2012	12/31/2012	12/31/2012	0.00	125.85	
<u>065727819</u>	CUST #716774682 - DEC 2012	12/31/2012	12/31/2012	0.00	139.67	

Payment Summary

Type	Count	Discount	Payment
Check	95	0.00	154,826.58
Packet Totals:	95	0.00	154,826.58

Payment Register

APPKT02128 - CC PROB/INS JANUARY 28, 2013 JS

01 - Vendor Set 01



Panola County, Texas

Bank: PANOLA COUNTY POOL - PANOLA COUNTY POOLED CASH

Vendor Number	Vendor Filed As			Total Vendor Amount
<u>1553</u>	PANOLA COUNTY ADULT PROBATION			29,426.60
Payment Type	Payment Number	Payment Date	Payment Amount	
Check		01/25/2013	29,426.60	
Payable Number	Description	Payable Date	Due Date	Discount Amount Payable Amount
<u>53399SCAP</u>	53399;SCAP NOV 2012;CORRECTING DEPOSIT	12/31/2012	12/31/2012	0.00 13,157.88
<u>53403PCAP</u>	53403;PCAP NOV 2012;CORRECTIN DEPOSIT	12/31/2012	12/31/2012	0.00 16,268.72

Vendor Number	Vendor Filed As			Total Vendor Amount
<u>0573</u>	PANOLA COUNTY AUTO REGISTRATION			450.00
Payment Type	Payment Number	Payment Date	Payment Amount	
Check		01/25/2013	450.00	
Payable Number	Description	Payable Date	Due Date	Discount Amount Payable Amount
<u>2013-01AUTOREG</u>	CREATION OF CHANGE FUND AUTO REGISTRATION 2013	01/25/2013	01/25/2013	0.00 450.00

Vendor Number	Vendor Filed As			Total Vendor Amount
<u>2916</u>	PANOLA COUNTY TAX OFFICE			750.00
Payment Type	Payment Number	Payment Date	Payment Amount	
Check		01/25/2013	750.00	
Payable Number	Description	Payable Date	Due Date	Discount Amount Payable Amount
<u>2013-01TAX</u>	CREATION OF CHANGE FUND TAX OFFICE 2013	01/25/2013	01/25/2013	0.00 750.00

Vendor Number	Vendor Filed As			Total Vendor Amount
<u>1362</u>	RICHARD H. THOMAS, INC.			4,208.00
Payment Type	Payment Number	Payment Date	Payment Amount	
Check		01/25/2013	4,208.00	
Payable Number	Description	Payable Date	Due Date	Discount Amount Payable Amount
<u>106811</u>	UA00134783-11 EBCO GENERAL LIAB;AIRPORT	01/25/2013	01/25/2013	0.00 2,850.00
<u>106831</u>	#01-FI-012250-6;CRIME RENEW	01/25/2013	01/25/2013	0.00 1,287.00
<u>106904</u>	71354742N LEE ANN JONES NOTARY BOND	01/25/2013	01/25/2013	0.00 71.00

Vendor Number	Vendor Filed As			Total Vendor Amount
<u>4012</u>	SIXTH COURT OF APPEALS-BI-STATE JUSTICE BLDG.			111.53
Payment Type	Payment Number	Payment Date	Payment Amount	
Check		01/25/2013	111.53	
Payable Number	Description	Payable Date	Due Date	Discount Amount Payable Amount
<u>112012</u>	NOVEMBER 2012 SIXTH COURT OF APPEALS	12/31/2012	12/31/2012	0.00 111.53

Bank: PROBATION DEPT POOL - PROBATION DEPARTMENTS POOLED CASH

Vendor Number	Vendor Filed As			Total Vendor Amount
<u>3433</u>	AMES COUNSELING AND FAMILY SERVICES			170.00
Payment Type	Payment Number	Payment Date	Payment Amount	
Check		01/25/2013	170.00	
Payable Number	Description	Payable Date	Due Date	Discount Amount Payable Amount
<u>11313LS</u>	1-8-13 LIFE SKILLS	01/24/2013	01/24/2013	0.00 85.00
<u>12013LS</u>	1-15-13 LIFE SKILLS	01/24/2013	01/24/2013	0.00 85.00

Payment Register

APPKT02128 - CC PROB/INS JANUARY 28, 2013 JS

Vendor Number	Vendor Filed As					Total Vendor Amount
<u>1250</u>	GATEWAY TIRE & SERVICE CENTER					15.00
Payment Type	Payment Number			Payment Date	Payment Amount	
Check				01/25/2013	15.00	
Payable Number	Description	Payable Date	Due Date	Discount Amount	Payable Amount	
<u>1501010831</u>	REGULAR FLAT;542617	01/24/2013	01/24/2013	0.00	15.00	
<u>4188</u>	HARRISON COUNTY					3,420.00
Payment Type	Payment Number			Payment Date	Payment Amount	
Check				01/25/2013	3,420.00	
Payable Number	Description	Payable Date	Due Date	Discount Amount	Payable Amount	
<u>080612122112JLA</u>	JL. ALLISON12/21/12 21 DAYS	12/31/2012	12/31/2012	0.00	1,890.00	
<u>112512121212CJS</u>	CJ BRIDGES 11/25/12 - 12/12/12	12/31/2012	12/31/2012	0.00	1,080.00	
<u>112912120312AJM</u>	AJ MARNEY 11/19/12-12/03/12	12/31/2012	12/31/2012	0.00	270.00	
<u>120312120412MHP</u>	MHPORTER 12/03/12 - 12/04/12	12/31/2012	12/31/2012	0.00	180.00	
<u>4074</u>	PANOLA COUNTY					70.00
Payment Type	Payment Number			Payment Date	Payment Amount	
Check				01/25/2013	70.00	
Payable Number	Description	Payable Date	Due Date	Discount Amount	Payable Amount	
<u>53420PROBP</u>	53420;DAMAGES CRIMINAL MISCHIEF CORRECTING DEPT	12/31/2012	12/31/2012	0.00	70.00	
<u>1362</u>	RICHARD H. THOMAS, INC.					250.00
Payment Type	Payment Number			Payment Date	Payment Amount	
Check				01/25/2013	250.00	
Payable Number	Description	Payable Date	Due Date	Discount Amount	Payable Amount	
<u>106502</u>	#660226X9543TCT12 CRIME POLICY JUVP	01/25/2013	01/25/2013	0.00	250.00	
<u>1390</u>	SC FUELS					49.64
Payment Type	Payment Number			Payment Date	Payment Amount	
Check				01/25/2013	49.64	
Payable Number	Description	Payable Date	Due Date	Discount Amount	Payable Amount	
<u>2115310PROB</u>	DECEMBER FUEL PURCHASES	12/31/2012	12/31/2012	0.00	49.64	
<u>2441</u>	SHELBY COUNTY TREASURER					452.94
Payment Type	Payment Number			Payment Date	Payment Amount	
Check				01/25/2013	452.94	
Payable Number	Description	Payable Date	Due Date	Discount Amount	Payable Amount	
<u>DEC-12</u>	DEC 2012 REIMBURSEMENT DA INVESTIGATOR SHELBY C	12/31/2012	12/31/2012	0.00	452.94	
<u>4036</u>	TX DEPARTMENT OF INFORMATION RESOURCES					3.98
Payment Type	Payment Number			Payment Date	Payment Amount	
Check				01/25/2013	3.98	
Payable Number	Description	Payable Date	Due Date	Discount Amount	Payable Amount	
<u>120112123112PROB</u>	H22710 PANOLA COUNTY DEC 2012	12/31/2012	12/31/2012	0.00	3.98	
<u>3874</u>	VERIZON WIRELESS					155.33
Payment Type	Payment Number			Payment Date	Payment Amount	
Check				01/25/2013	155.33	
Payable Number	Description	Payable Date	Due Date	Discount Amount	Payable Amount	
<u>6837365206</u>	JANUARY 2013 CELLULAR PHONE	01/24/2013	01/24/2013	0.00	155.33	

Payment Summary

Type	Count	Discount	Payment
Check	5	0.00	34,946.13
Packet Totals:	5	0.00	34,946.13

Type	Count	Discount	Payment
Check	9	0.00	4,586.89
Packet Totals:	9	0.00	4,586.89

Cash Fund Summary

Fund	Name	Amount
599	POOLED CASH FUND	-4,586.89
999	POOLED CASH FUND	-34,946.13
	Packet Totals:	-39,533.02



Panola County, Texas

Payable #	Payable Type	Post Date	Item Date	Due Date	Discount Date	Amount	Tax	Shipping	Discount	Total
Payable Description	Bank Code									

Vendor: 2010 - TEXAS COUNTY & DISTRICT RETIREMENT SYSTEM Vendor Total: 840.00

WJONES Invoice 12/18/2012 12/18/2012 12/18/2012 12/18/2012 840.00 0.00 0.00 0.00 840.00

WARREN JONES RETIREMENT PROBATION DEPT POOL - PROBATION DEPARTM Payment Date: 12/18/2012 Bank Draft: DFT0002731

CONTRIBUTION FOR FY11-12

Items

Item Description	Commodity	Units	Price	Amount	Tax	Shipping	Discount	Total
WARREN JONES RETIREMENT CONT	N/A	0.00	0.00	840.00	0.00	0.00	0.00	840.00

Distributions

Account Number	Account Name	Project Account Key	Amount
<u>572-22030</u>	RETIREMENT & DEATH BENEFITS		840.00

VOL. 82 PAGE 866

LAW OFFICES OF MIKE PARKER
A PROFESSIONAL CORPORATION
200 WEST WELLINGTON STREET
POST OFFICE BOX 1011
CARTHAGE, TEXAS 75633
TELEPHONE (903) 693-4294
FACSIMILE (903) 693-4358

MIKE PARKER
ATTORNEY & COUNSELOR AT LAW

BOARD CERTIFIED ** CIVIL TRIAL LAW
TEXAS BOARD OF LEGAL SPECIALIZATION

FACSIMILE TRANSMITTAL FORM

DATE: January 14, 2013
TO: Judge Anderson
TELECOPIER NUMBER: 903-693-2726
FROM: Mike Parker
TELECOPIER NUMBER: 903-693-4358
Number of Pages (including cover letter): 1

ENCLOSURES AND/OR COMMENTS:

Please place my presentation on Mildred Faye Jefferson plaque on your schedule for January 28, 2013 at 9:00 a.m. Thank you.


Mike Parker

IMPORTANT: If you do not receive the number of pages indicated above, please call Karen at 1-903-693-4294.

CONFIDENTIALITY NOTE
THE INFORMATION CONTAINED IN THIS FACSIMILE MESSAGE IS LEGALLY PRIVILEGED AND CONFIDENTIAL INFORMATION WHICH IS INTENDED ONLY FOR THE USE OF THE INDIVIDUAL OR ENTITY NAMED ABOVE. IF THE READER OF THIS MESSAGE IS NOT THE INTENDED RECIPIENT, YOU ARE HEREBY NOTIFIED THAT ANY USE, DISSEMINATION, DISTRIBUTION OR REPRODUCTION OF THIS MESSAGE IS STRICTLY PROHIBITED. IF YOU HAVE RECEIVED THIS MESSAGE IN ERROR, PLEASE IMMEDIATELY NOTIFY US BY TELEPHONE AND RETURN THE ORIGINAL MESSAGE TO US AT THE ADDRESS LISTED ABOVE VIA THE U.S. POSTAL SERVICE. THANK YOU.



House of Representatives

DR. MILDRED JEFFERSON INSPIRED AN ENTIRE GENERATION OF PRO-LIFE LEADERS

Mr. SMITH of New Jersey

Today, I want to recognize and honor the life of Dr. Mildred Jefferson, who passed away on October 15, 2010, at the age of 84.

Dr. Jefferson was a trailblazer of her time. She was the first African-American woman to graduate from Harvard Medical School, the first female surgical intern at Boston City Hospital and the first woman admitted to membership in the Boston Surgical Society.

Dr. Jefferson was born in Pittsburg, Texas, on April 6, 1926, to Gurthie Jefferson, a minister and Millard Jefferson a schoolteacher. She graduated from Texas College in Tyler and earned a master's degree from Tufts University in Medford, Massachusetts before attending Harvard Medical School. In her lifetime she also was the recipient of 28 honorary degrees.

Her life was historic in many ways, yet she will be remembered not only for the lives she saved as a physician but also for the lives she saved as an advocate for the unborn.

From the earliest years of the right to life movement, she dedicated herself to the cause, always beautifully articulating the humanity of unborn children. Poised and passionate, always focused and extremely devoted, she made history and inspired an entire generation of pro-life leaders myself included. It was always an inspiring experience to listen to Dr. Jefferson speak so eloquently with deep compassion for the lives of children in the womb.

Dr. Jefferson was among the founders of the National Right to Life Committee (NRLC) and from 1975-1978 she served three terms as President of NRLC. She also served as director of Massachusetts Citizens for Life and a board member of American Life League. She was also a founding member of the board and a past president of the Value of Life Committee of Massachusetts and was active in Black Americans for Life.

Among all of her accolades and accomplishments, she should be best known for her own eloquent description of why she stood in solidarity with the unborn fighting day in and day out for their first right, the right to life. In her own words,

"I became a physician in order to help save lives. I am at once a physician, a citizen, and a woman, and I am not willing to stand aside and allow the concept of expendable human lives to turn this great land of ours into just another exclusive reservation where only the perfect, the privileged, and the planned have the right to live."

Dr. Jefferson was always graceful. She embodied compassion. Her life is an example to us of the impact of faithful devotion to the sanctity of human life. Dr. Jefferson knew that you cannot speak of human and civil rights, while precluding virtually all protection to the most persecuted minority in the world today: unborn children.

She reminded us all,

"The right-to-life cause is not the concern of only a special few but it should be the cause of all those who care about fairness and justice, love and compassion and liberty with law."

Dr. Jefferson is correct when she said,—the cause for the right to life concerns all of us. Someday, when our goal of ending abortion is finally realized, future generations of Americans will look back on us and wonder how and why such a rich and seemingly enlightened society, so blessed and endowed with the capacity to protect and enhance vulnerable human life, could have instead permitted, and even promoted, death to children and exploitation of women by abortion.

It was an honor to work alongside Dr. Jefferson to fight the injustice of abortion, and I know her legacy and memory will live on in the lives of those who knew her and in the lives of the unborn children she helped save

-Obituary-

Dr. Mildred Fay Jefferson was born April 6, 1927, in Pittsburg, Texas to Millard F. Jefferson and Gurtline "Gurthie" Roberts Jefferson. As a young child, she and her family moved back to the Walnut Grove Community in Carthage, Texas where her mother was raised.

Dr. Jefferson completed her education at the Carthage Colored High School, now known as Turner High School, in 1943. She later graduated summa cum laude from Texas College in Tyler. She earned a master's degree from Tufts University in Medford, Massachusetts and in 1951 became the first African-American woman to graduate from Harvard Medical School.

After graduating from Harvard, she became the first African American to be a surgical intern at the prestigious Boston City Hospital and the first female admitted into the Boston Surgical Society. Hailed as a powerful and poised orator, Dr. Jefferson even made three attempts at a seat in the U.S. Senate although unsuccessful in her bids. But Dr. Jefferson is perhaps best known for her fervent, right-to-life platform.

In 1981, she testified before Congress as a result of the historic 1973 Supreme Court case, Roe v. Wade. Passionate about her pro-life beliefs, Dr. Jefferson served as president of the National Right to Life Committee three times and is credited as one of the founders of the organization in the early 1970s. Dr. Jefferson was also a former director of the Massachusetts Citizens for Life group and was a member of a host of other pro-life organizations. She championed the efforts of the pro-life movement and distinguished herself as not only an accomplished physician but also as a crusader for the rights of the unborn child.

Dr. Mildred Fay Jefferson passed away at her home in Cambridge, Massachusetts, October 15, 2010 at the age of 83. She is survived by one aunt, Thelma Roberts, and a host of cousins and dear friends.

Proposed text for Plaque

Dr. Mildred Faye Jefferson was born in 1926, was reared in Panola County, and graduated from Carthage Public Schools. Jefferson was a trailblazer and is a nationally recognized leader of the Right-to-Life movement, serving three terms as president of the National Right-to-Life Committee of which she was a founder. She graduated summa cum laude from Texas College in Tyler, Texas., and 1951 became the first black woman to graduate from Harvard Medical School. Dr. Jefferson served as a general surgeon with the former Boston University Medical Center and Assistant Clinical Professor of Surgery at Boston University Medical School. Jefferson's purpose in life is best explained in her own words: "I am not willing to stand aside and allow the concept of expendable human lives to turn this great land of ours into just another exclusive reservation where only the perfect, the privileged, and the planned have the right to live." Jefferson passed away in 2010 in Cambridge, Massachusetts.

Dedication

Dr. Mildred Fay Jefferson



1926-2010

“
*I became a physician in order to help save lives. I am at
once a physician, a citizen, and a woman, and I am not
willing to stand aside and allow the concept of expendable
human lives to turn this great land of ours into just another
exclusive reservation where only the perfect, the privileged,
and the planned have the right to live.*
”

This handbook provides a summary of the employment policies of *Panola County*. Copies have been given to employees at orientation.

1.05 EMPLOYMENT-AT-WILL

Panola County employment practices operate under the legal doctrine known as "employment at will". Within state and federal employment law, *Panola County* has the right to terminate an employee at any time and for any reason, with or without notice, except that *Panola County* will comply with all state and federal legal requirements requiring notice and an opportunity to be heard in the event of disciplines or dismissal. *Panola County* will attempt to ensure that employee terminations are not made in an arbitrary or capricious manner. However, this handbook and the personnel policies referenced do not constitute or imply a contract, agreement, promise or guarantee of employment or continued employment. *Panola County* also reserves the right to change these policies at any time and without prior notice to employees.

1.06 EQUAL EMPLOYMENT OPPORTUNITY

It is the policy of *Panola County* to provide equal employment opportunity to employees and applicants for employment without regard to race, creed, religion, color, sex, age, national origin, disability, military status, or any other classification protected under applicable law. Discrimination in employment will not be tolerated.

Equal employment opportunity applies to all terms, conditions and privileges of employment, including hiring, probation, training, promotion, transfer, compensation, benefits and assistance, layoff, recall, employee facilities, discharge, and retirement.

Panola County has appointed an Equal Employment Opportunity Panel comprised of Clara Jones, Alberto Garza and Jim Young. This panel's responsibility includes monitoring compliance with this policy and reporting in accordance with applicable law. If any employee or applicant for employment believes s/he has been discriminated against or believes s/he has observed or is aware of any discrimination, it should be reported immediately to the department head or to a member of the EEO Panel. An investigation will be conducted and remedial action taken as appropriate. All elected officials and department heads are strongly urged to use the services of the EEO Panel.

Reasonable effort will be made that all contractors and subcontractors working for *Panola County* comply with this Equal Employment Opportunity policy. Any violation may result in penalties including, but not limited to termination of contract.

1.07 WORKPLACE DISCRIMINATION

Panola County policy prohibits any employee acts of discrimination. The use of racial or ethnic jokes or derogatory remarks will not be tolerated, will be investigated, and disciplinary action will be taken, if warranted.

PROPOSED ELECTION AGREEMENT**Panola County****&****Gary ISD****THE STATE OF TEXAS****COUNTY OF PANOLA**

THIS AGREEMENT is made and entered into by and between Panola County, Texas and the Gary ISD, and by authority of Section 31.092, Vernon's Texas Civil Statutes, Election Code for conducting and supervision of the elections for Gary ISD.

The Election Administrator will be the acting agent for Gary ISD to contract with third parties in respect to election services within the scope of the duties. All invoices will be sent directly from the third party to Gary ISD for payment (i.e. printing of ballots, election kits, etc).

THIS AGREEMENT is entered into in consideration of the mutual covenants and agreements hereinafter set out. IT IS AGREED AS FOLLOWS:

I. DUTIES AND SERVICES OF PANOLA COUNTY

The Election Administrator agrees to coordinate, supervise, and handle all aspects in administering the Trustees elections in accordance with the provision of the Texas Election Code and as outlined in this Agreement.

The Election Administrator in connection with the holding and supervision of said election shall assume the following responsibilities:

- (a) All Elections Officers approved by Commissioners' Court.
- (b) Arrange for the notification, including writ of election and training.
- (c) The Election Administrator will be responsible for notifying each election judge and alternate judge of his/her appointment and for determining the number of clerks and other election workers authorized to work at each voting location.
- (d) Election judges shall be responsible for picking up election supplies and materials at the time and place determined by the Election Administrator. (This responsibility will be set forth in the election judges' letter notifying the judge of his/her appointment.)
- (e) Arrange for permission to use the polling locations.

- (f) Procure, prepare, proof, and distribute ballots.
- (g) Procure, prepare and distribute election judges' kits.
- (h) Use Auto Mark voting system (early voting and Election Day).
- (i) Assemble lists of registered voters to be used in conducting the election in conformity with the election precincts established for the election.
- (j) Provide legal notice of the date, time and place of the testing of the electronic tabulation equipment and conduct such testing.
- (k) Supervise the handling and disposition of election returns, voted ballots, etc., and tabulate unofficial returns and assist in preparing the tabulation for the official canvass.
- (l) Prepare the unofficial tabulation report after all precincts have been counted, and will provide a copy of the report to Gary ISD as soon as possible after all returns have been tabulated, but in no event later than 2:00 p.m. on the Monday following the election.
- (m) Supervise the conduct of early voting in person and by mail and supply personnel to serves as deputy early voting clerks.
- (n) All early voting ballots (those cast by mail and those cast by personal appearance) will be prepared for counting by an Early Voting Ballot Board.
- (o) Gary ISD will be responsible for payment to all parties who have provided services, supplies, and voting locations for the election. The Election Administrator shall not be liable to any third parties for any default by Gary ISD in connection with holding the election, including failure Gary ISD to pay for services, supplies, and voting locations for this election.
- (p) Prepare the results of the election for Gary ISD to conduct its own canvass of the election as prescribed by law.
- (q) Preparation of election orders, resolutions, notices, and other pertinent documents for adoption or execution by the appropriate office or body.
- (r) Prepare and send out "Notice of Drawing" for a place on the Ballot to all eligible candidates.

II. DUTIES AND SERVICES OF GARY ISD

Gary ISD in connection with the holding and supervision of said election shall assume the following responsibilities and shall directly bear any attendant costs for the same:

(a) Shall receive from their candidates all documents filed under Title 15 of the Texas Election Code relating to campaign contributions and expenditures.

(d) Deliver to the Election Administrator as soon as possible, a list showing the official wording for the Election titles that is to be printed on the ballot with the exact form, orders, wording, and spelling that is to be used.

(e) Pay any additional costs incurred by the Election Administrator if a recount for the election is required, or the election is contested in any manner.


(f) Shall issue "Certificates of Election" to candidates elected after the Official Canvass.


III. PAYMENT FOR SERVICES

(a) Gary ISD shall pay to Panola County ten percent (10%) of the budget cost for administrative fees pursuant to Texas Election Code, Section 31.100.

(b) After the date of election and completion of all duties required of the Election Administrator, Panola County shall then compute the final statement for all services rendered as an administrative fee, and bill Gary ISD such sum. Gary ISD shall be responsible for paying this amount within thirty (30) days from the date of billing.

IN WITNESS WHERE OF, the parties hereto have made and entered into this agreement this 14 day of Jan, 2013.


David L. Anderson
County Judge


Todd Greer
Superintendent

903 693-0342

Rusty

903-918-1680

VOL. 82 PAGE 876

3D SECURITY, INC.
SECURITY AND CCTV PROFESSIONALS
WWW.3DMAXSECURITY.COM
309 S. MARSHALL
HENDERSON, TX 75654
903-657-2217

PROTECTION PROPOSAL

DATE:
CUSTOMER: Panola County Courthouse

PHONE NO.

WE HERBY SUBMIT SPECIFICATIONS AND ESTIMATES FOR:

Upgrade panic notification system to allow for up to 70 simultaneous recipients. The new system will send notifications practically immediately to a recipient's phone via Text or Email. This Upgrade will communicate wirelessly via cellular, allowing you do away with the current dedicated analog phone line as it is no longer needed.

Installed Upgrade	\$ 1586.17
Monthly Cellular	\$40.00

If you want to secure the voting machine room as a separate alarm

Door Sensor	\$85.00
Keypad	\$176.00
Monitoring	No Additional Charges

David Anderson
SIGNATURE

1-28-2013
DATE

PO#

Sammy Brown Library

522 W. College
Carthage, Texas 75633
Phone 903-693-6741
Fax 903-693-4503

January 23, 2013

Honorable Judge David Anderson
Commissioners Court
Panola County Courthouse
Carthage, TX 75633

Dear Sir:

I would like to introduce for the court's approval, a deduct change order to the Cantilevered Welded Frame Shelving for the Sammy Brown Library.

The change I have requested is to remove the acrylic covers from the periodical shelving. I do not feel the acrylic covers are a necessary expenditure.

This change order will result in a savings of \$2,690.08 on the contract bid.

If the court approves this deduct change order for shelving bid, I would ask the court to send the signed revised bid sheets to Maureen Arndt, Design Architect of 720 Designs. Mrs. Arndt will submit the new order to Cultural Surroundings for immediate implementation.

Sincerely,



Debbie Godwin
Sammy Brown Library

cc: Sidney Burns

January 22, 2013

Cultural Surroundings
5600 W. Lovers Lane Suite 116,
PMB 393 Dallas, TX 75230

Re: Sammy Brown Library Shelving Bid Change Order

Dear Mr. MacKenzie:

This letter will serve as a deduct change order to the Cantilevered Welded Frame Shelving for the Sammy Brown Library.

The change includes removing the acrylic covers from item number SS1466 Hinged Periodical Shelving for a deduct of \$2,690.08

The new contract amount will therefore be:

Original Bid Price:	\$33,265.66
Deduct amount:	\$2,690.08
New Contract amount:	\$30,575.58

Sincerely,



Maureen Arndt, AIA, LEED Green Associate
President, 720 design, inc.



9003 Oakpath Lane
Dallas, TX 75243
www.720design.net

CULTURAL SURROUNDINGS

5600 WEST LOVERS LANE
SUITE 116, PMB 393
DALLAS, TX 75209
(214) 742-2400 PHONE
(214) 742-2407 FAX

PROPOSAL: 5854

DATE: 01/22/13

PROJECT#: 1-459

VOL. 82 PAGE 879

PROPOSAL FOR:

Sammy Brown Library
321 South Market Street
Carthage, TX 75633

INSTALL AT:

Sammy Brown Library
321 South Market Street
Carthage, TX 75633

SALESPERSON
McKenzie, Nicole

CUSTOMER P/O:

QUOTE VALID
12/31/12

#	PRODUCT	DESCRIPTION	QTY	SELL	EXTENDED
		OPAC & Children's & Computer Stations			0.00
		MJ Industries Library Shelving Cantilevered, Welded Frame Metal Finish: Artic White All Dimensions Nominal			
3	MJ36102466-- SB	Standard Steel Shelving Double Face Unit 66"H x 24"D x 36"H w/ (8) 10"D Integral Back Lip Adj. Shelves & (2) 12"D Fixed Sloped Base Shelves Item Code: SD1066	20	461.90	9,238.00
3	Casters	Caster Base Frame For (4) Ranges of 5 Section (16) 2 Section Caster Bases (4) 1 Section Caster Bases Item Code: SD1066	20	0.00	0.00
3	MJD36122448 -SB	Divider Type Steel Shelving Double Face Unit 48"H x 24"D x 36"H w/ (4) 12"D Adj. Divider Shelves	25	484.79	12,119.75

CONTINUED...

CULTURAL SURROUNDINGS

5600 WEST LOVERS LANE
SUITE 116, PMB 393
DALLAS, TX 75209
(214) 742-2400 PHONE
(214) 742-2407 FAX

PROPOSAL: 5854

DATE: 01/22/13

PROJECT#: 1-459

PROPOSAL FOR:

Sammy Brown Library
321 South Market Street
Carthage, TX 75633

INSTALL AT:

Sammy Brown Library
321 South Market Street
Carthage, TX 75633

SALESPERSON
McKenzie, Nicole

CUSTOMER P/O:

QUOTE VALID
12/31/12

#	PRODUCT	DESCRIPTION	QTY	SELL	EXTENDED
		& (2) 12"D Fixed Sloped Divider Base Shelves Item Code: SD1448			
3	Casters	Caster Base Frame For (5) Ranges of 5 Section (5) 3 Section Caster Bases (5) 2 Section Caster Bases Item Code: SD1448	25	0.00	0.00
3	MJ36101290- SB	Standard Steel Shelving Single Face Unit 90"H x 12"D x 36"H w/ (6) 10"D Integral Back Lip Adj. Shelves & (1) 12"D Fixed Sloped Base Shelf Item Code: SS1090	12	224.11	2,689.32
3	MJHD3612126 6	Hinged Periodical Shelving Single Face Unit 66"H x 12"D x 36"H w/ (4) 14" Hinged Periodical Shelves w/ (4) Divider Storage Shelves Item Code: SS1466	17	384.03	6,528.51

CULTURAL SURROUNDINGS

5600 WEST LOVERS LANE
SUITE 116, PMB 393
DALLAS, TX 75209
(214) 742-2400 PHONE
(214) 742-2407 FAX

PROPOSAL: 5854

DATE: 01/22/13

PROJECT#: 1-459

VOL. 82 PAGE 881

PROPOSAL FOR:

Sammy Brown Library
321 South Market Street
Carthage, TX 75633

INSTALL AT:

Sammy Brown Library
321 South Market Street
Carthage, TX 75633

SALESPERSON
McKenzie, Nicole

CUSTOMER P/O:

QUOTE VALID
12/31/12

#	PRODUCT	DESCRIPTION	QTY	SELL	EXTENDED
3	MJCORNER66	Steel Corner Filler 66"H x 12"Sq. Item Code: SS1466	2	0.00	0.00
3	MJWOODBKT8	Wood Canopy Top Bracket 8"L Item Code: SD1448	30	0.00	0.00
3	S3SBS8	Book Support Chrome Integral Back Lip	284	0.00	0.00
		Steel Library Shelving Sub Total			30,575.58

WE LOOK FORWARD TO DOING BUSINESS WITH YOU!!
MASTERCARD AND VISA ACCEPTED

SUBTOTAL.....: 30,575.58

ACCEPTED BY 

DATE ACCEPTED 1-28-2013

TOTAL 30,575.58

County Of Panola

DEBBIE CRAWFORD
TAX ASSESSOR - COLLECTOR
PANOLA COUNTY COURTHOUSE
110 S. SYCAMORE, ROOM 211
CARTHAGE, TEXAS 75633

(903) 693-0340

January 23, 2013

Panola County Commissioners Court
Panola County Courthouse

Gentlemen:

Please be advised I request the Panola County Commissioners Court to set aside change funds for the Ad Valorem Tax and Auto Registration Offices. This request is made in accordance with the Texas Local Government – Section 130.902 (copy enclosed).


I request \$750.00 for the Ad Valorem Tax Office and \$450.00 for the Auto Registration Office.

Sincerely,



Debbie Crawford
Panola County Tax Assessor Collector

Per local Government Code 130.902 the amounts listed above are approved by the County Auditor.



Sidney Burns
Panola County Auditor

Court Opinions

Texas Local Government Code - Section 130.902. Change Fund In Counties

US Supreme Court
US Tax Court
Board of Patent Appeals

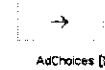
Legal Research Home > Texas Laws > Local Government Code > Texas Local Government Code - Section 130.902. Change Fund In Counties

State Laws

BrotherMall Official Site

www.brothermall.com

Shop Brother Mall Today and Get Free Shipping When You Spend \$50!



- Alabama
Arizona
California
Florida
Georgia
Illinois
Indiana
Massachusetts
Michigan
Nevada
New Jersey
New York
North Carolina
Oregon
Pennsylvania
Texas
Virginia
Washington

§ 130.902. CHANGE FUND IN COUNTIES. (a) The commissioners court of a county may set aside from the general fund of the county an amount approved by the county auditor for use as a change fund by any county or district official who collects public funds. The fund may be used only to make change in connection with collections that are due and payable to the county, the state, or another political subdivision of the state that are often made by the official.

(b) The bond of that official who receives such a change fund must cover the official's responsibility for the correct accounting and disposition of the change fund.

(c) A change fund may not be used to make loans or advances or to cash checks or warrants of any kind.

(d) On the recommendation of the county auditor, the commissioners court may increase or decrease the change fund at any time.

Acts 1987, 70th Leg., ch. 149, § 1, eff. Sept. 1, 1987. Renumbered from § 130.002 by Acts 1989, 71st Leg., ch. 1, § 23(a)(1), eff. Aug. 28, 1989. Amended by Acts 1989, 71st Leg., ch. 727, § 1, eff. Aug. 28, 1989.

Section: Previous 130.0046 130.005 130.006 130.007 130.008 130.009 130.901 130.902 130.904 130.905 130.906 130.907 130.908 130.909 131.001 Next

Last modified: August 11, 2007

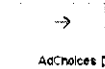
US Code

- 1 USC - General Provisions
2 USC - The Congress
3 USC - The President
4 USC - Flag and Seal
5 USC - Gov't Organization
6 USC - Domestic Security
7 USC - Agriculture
8 USC - Aliens and Nationality
9 USC - Arbitration
10 USC - Armed Forces
11 USC - Bankruptcy
12 USC - Banks and Banking
13 USC - Census
14 USC - Coast Guard
15 USC - Commerce and Trade
16 USC - Conservation
17 USC - Copyrights
18 USC - Crimes
19 USC - Customs Duties
20 USC - Education
21 USC - Food and Drugs
22 USC - Foreign Relations
23 USC - Highways
24 USC - Hospitals
25 USC - Indians
26 USC - Internal Revenue Code
27 USC - Intoxicating Liquors
28 USC - Judiciary
29 USC - Labor
30 USC - Mineral Lands
31 USC - Money and Finance
32 USC - National Guard
33 USC - Navigation
34 USC - Navy (repealed)
35 USC - Patents
36 USC - Patriotic Societies
37 USC - Uniformed Services
38 USC - Veterans' Benefits
39 USC - Postal Service
40 USC - Public Property
41 USC - Public Contracts
42 USC - Public Health
43 USC - Public Lands
44 USC - Public Printing
45 USC - Railroads
46 USC - Shipping
47 USC - Telecom
48 USC - Territories
49 USC - Transportation
50 USC - War

Title IV Compliance

www.compliancepointDM.com

We help for-profit colleges comply with Title IV, Program Integrity



US Constitution

- Preamble
Art. I - Legislative
Art. II - Executive
Art. III - Judicial
Art. IV - States' Relations
Art. V - Mode of Amendment
Art. VI - Prior Debts
Art. VII - Ratification

WHEREAS, the Local Government Code, Section 130.902, V.T.C.A. allows for the Commissioners' Court of a county to set aside from the general fund of the county an amount approved by the County Auditor for use as a change fund by any county or district official who collects public funds. Section 130.902 further states that said fund may be used only to make change in connection with collections that are due and payable to the county, the state, or another political subdivision of the state that are often made by the official; and

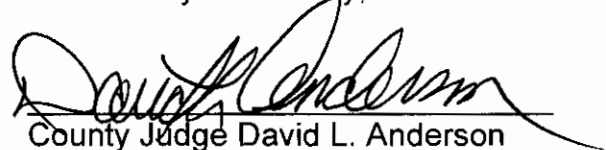
WHEREAS, Panola County Tax Assessor-Collector Debbie Crawford has requested two (2) change funds so that her offices may make change for those who enter therein to pay taxes and/or vehicle registration fees; and


WHEREAS, Sidney Burns, the County Auditor of Panola County, Texas, has approved change funds in the amount of **SEVEN HUNDRED FIFTY AND NO/100 (\$750.00) DOLLARS** to be set aside from the general fund for a change fund for the Ad Valorem Tax Office; and **FOUR HUNDRED FIFTY AND NO/100 (\$450.00) DOLLARS** to be set aside from the general fund for a change fund for the Auto Registration Office;


NOW, THEREFORE, IT IS ORDERED by the Commissioners' Court of Panola County, Texas, meeting in Open Session at a properly scheduled meeting of said Court, that the sum of **SEVEN HUNDRED FIFTY AND NO/100 (\$750.00) DOLLARS** be set aside from the general fund for a change fund for the Ad Valorem Tax Office; and **FOUR HUNDRED FIFTY AND NO/100 (\$450.00) DOLLARS** be set aside from the general fund for a change fund for the Auto Registration Office.

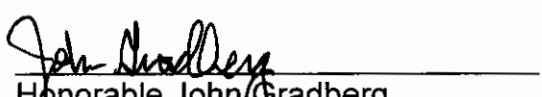
IT IS FURTHER ORDERED that such change funds may not be used to make loans or advances or to cash checks or warrants of any kind.

PASSED, APPROVED, and ADOPTED this 28th day of January, 2013.


County Judge David L. Anderson



Honorable Ronnie LaGrone
Commissioner, Precinct One

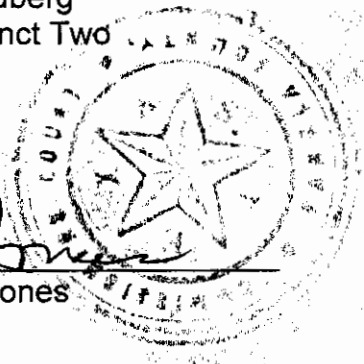

Honorable Frank R. Langley, Jr.
Commissioner, Precinct Three


Honorable John Gradberg
Commissioner, Precinct Two


Honorable Dale LaGrone
Commissioner, Precinct Four

ATTEST:


County Clerk Clara Jones



RECAPITULATION

PROJECT *Furnish + Install Door @ Warrant Room A105*
 LOCATION *Panola County Sheriff's Office*
 ARCHITECT
 ENGINEER

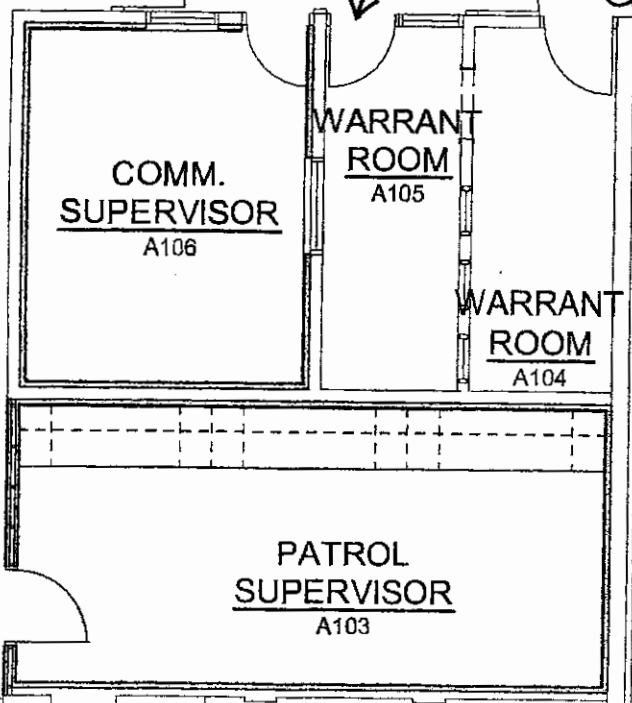
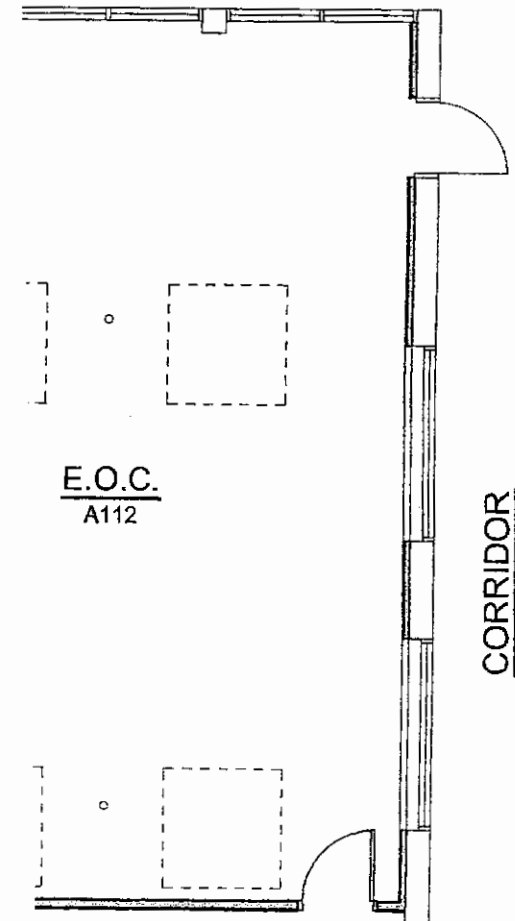
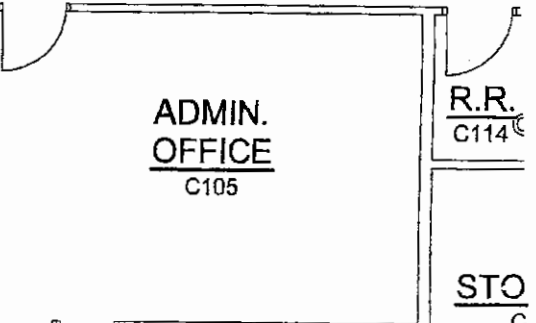
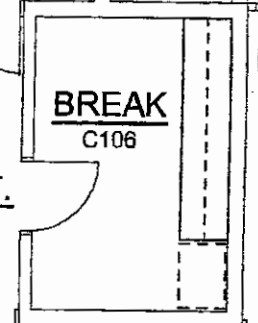
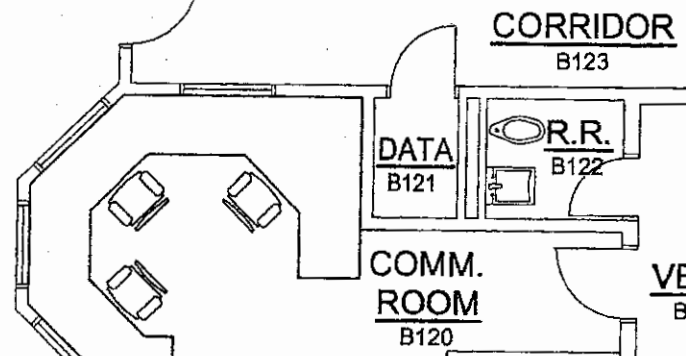
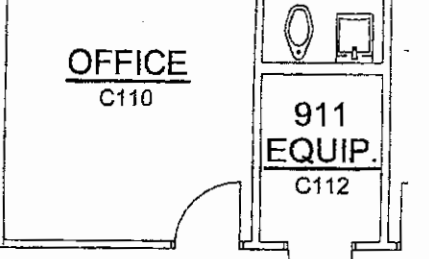
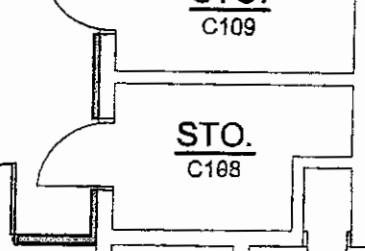
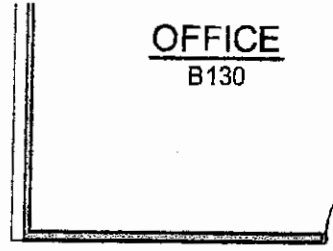
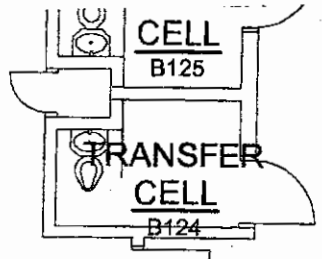
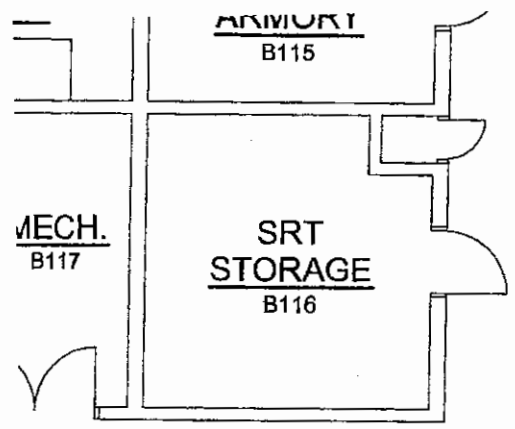
ESTIMATE NO.
 SHEET NO.
 DATE

SUMMARY BY

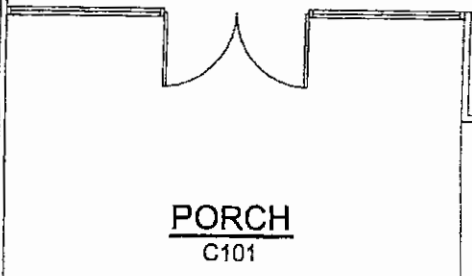
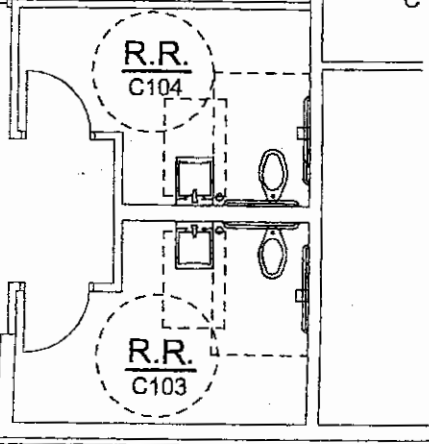
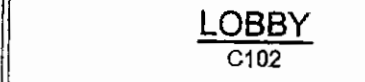
PRICES BY

CHECKED BY

DESCRIPTION	QUANTITY	UNIT	UNIT PRICE	TOTAL ESTIMATED		TOTAL
				MATERIAL COST	LABOR COST	
<i>Wood Door</i>	<i>1</i>	<i>EA</i>		<i>458-</i>	<i>80-</i>	<i>538-</i>
<i>Hardware</i>	<i>1</i>	<i>EA</i>		<i>422-</i>	<i>80-</i>	<i>502-</i>
					<i>160-</i>	<i>1040-</i>
					<i>Labor Burden -</i>	<i>67-</i>
						<i>1107-</i>
					<i>O.H. & Profit 15% =</i>	<i>166-</i>
						<i>1273-</i>



New Door



CHASE

Jack Smith

Door Hardware

From: "Ryan Sword" <Ryan@swordco.com>
To: "Jack Smith" <jsmith@jekcc.com>
Sent: Thursday, January 17, 2013 12:28 PM
Subject: RE: Panola County Sheriff's Office - Carthage

Jack,
422.00. includes frt. No tax included. I can handle this for you as david has retired.

Sincerely,

Ryan Sword
6525 South Broadway
Tyler, TX 75703
p: 903.561.1921
f: 903.561.4932
www.swordco.com

-----Original Message-----

From: Jack Smith [mailto:jsmith@jekcc.com]
Sent: Tuesday, January 15, 2013 5:13 PM
To: info
Subject: Panola County Sheriff's Office - Carthage

David,
Please provide pricing for an office lockset, hinges and closer for a 2'-4"x6'-8" door they want to add. Please call if you have any questions.

Thanks,
Jack

--

This message has been scanned for viruses and dangerous content, and is believed to be clean.

PERSONNEL CHANGE REQUEST

Name: BRANDON SHEPPARD

Department: R2.6 PCT #1

Position: OPERATOR

New Position (if applicable): FOREMAN

Current wage or salary \$ 16.06 / hr.

New wage or salary \$ 3412.00 / mo.

Effective date of change 2/1/13

Ronnie Lee G...
Elected Official/Department Head
Signature

1-28-13
Date Signed

PERSONNEL CHANGE REQUEST

Name: TERRY EVANS

Department: R2B PUT 3

Position: OPERATOR

New Position (if applicable): FREEMAN

Current wage or salary

\$ 16.06 ⁰⁶/_{xx}

New wage or salary

\$ 3412. ¹⁶/_{xx} / mo

Effective date of change

11/29/13


Elected Official/Department Head
Signature

1-28-13
Date Signed